

interbau

ARCHISTAIRS

**FINEST
EXPRESSIONS
OF STYLE**

THE PERFECT BALANCE OF FUNCTION AND DESIGN

CONTENTS

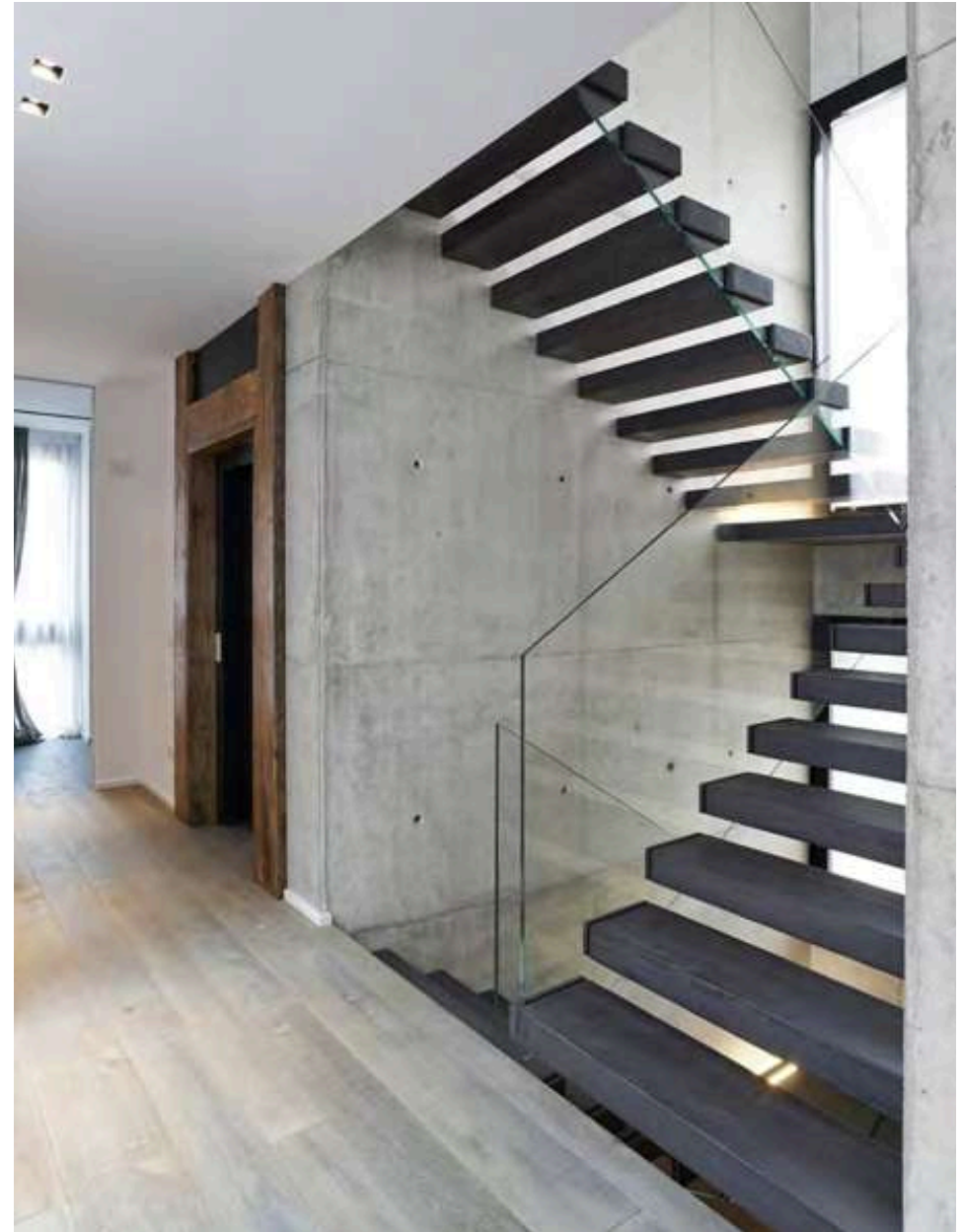
PRIVATE HOUSE – CARPI, MODENA / ITALY – 4
LOFT – MILANO / ITALY – 11
BANK OF CHINA – FLUSHING, NEW YORK / USA – 15
PRIVATE HOUSE – ROVERETO, TRENTO / ITALY – 21
SPRING STUDIOS – TRIBECA, NEW YORK / USA – 27
PENTHOUSE – MIAMI / USA – 33
PRIVATE HOME – RIVA DEL GARD / ITALY – 39
HOTEL LOBBY – TRENTO ALTO ADIGE / ITALY – 45
PRIVATE HOUSE – VILLAZZANO, TRENTO / ITALY – 49
THOMA BRAVO HEADQUARTERS – BRICKELL CITY CENTRE, MIAMI / USA – 55
PRIVATE HOME – TRAMIN, BOLZANO / ITALY – 61
MEDIACOM HEADQUARTERS – BLOOMING GROVE, NEW YORK / USA – 67
PENTHOUSE – PONTE DI LEGNO, BRESCIA / ITALY – 73
PRIVATE HOME – BOLZANO / ITALY – 79
PRIVATE HOME – MANTOVA / ITALY – 83
PRIVATE HOME – PREDAZZO, TRENTO / ITALY – 87
BOFFI, DEPA DOVA SHOWROOM – MADDISON AVENUE, MANATTHAN / USA – 93

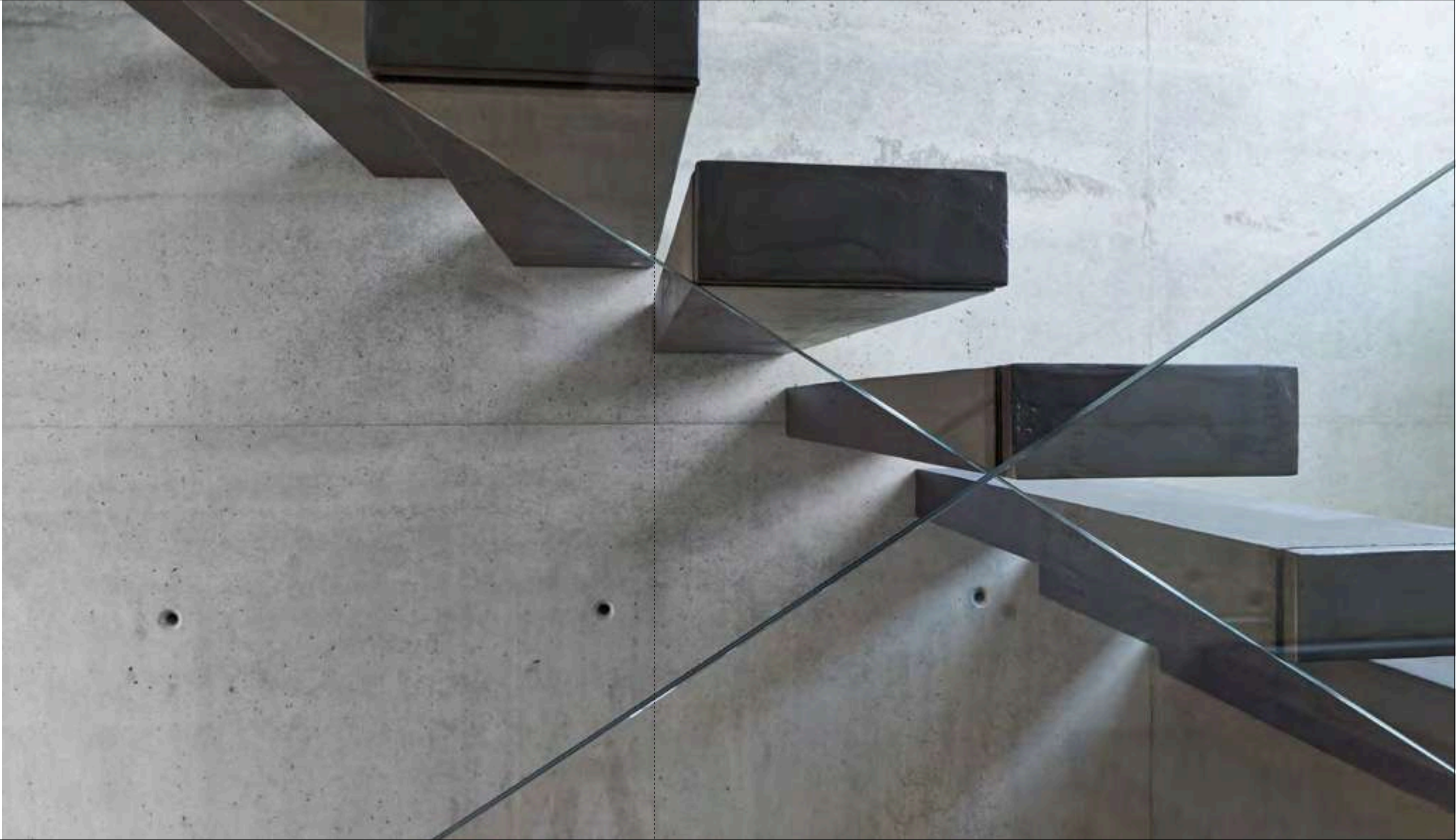
PRIVATE HOME – MANTOVA / ITALY – 99
LENTSCH WINERY – APPIANO, BOLZANO / ITALY – 105
PRIVATE HOME – MADRID / SPAIN – 111
PRIVATE HOME – LUSON, BOLZANO / ITALY – 115
PRIVATE HOUSE – BRESCIA / ITALY – 121
BOSCO VERTICALE – MILANO / ITALY – 125
TLC PROMOTION SRL – CASTIGLIONE D.S. MANTOVA / ITALY – 129
TOWNHOUSE – BOLOGNA / ITALY – 135
BONZI SPA – COCCAGLIO, BRESCIA / ITALY – 141
LE MARCHESINE WINERY – FRANCIACORTA, BRESCIA / ITALY – 145
MINVERVA SRL – BOLOGNA / ITALY – 149
PRIVATE HOME – TRENTO / ITALY – 153
PRIVATE HOME – MANTOVA / ITALY – 157
PENTHOUSE – LUXEMBURG CITY / LUXEMBURG – 161
BOUTIQUE – LUGANO / SWISS – 163

01

RHAPSODY OF HIGH DESIGN

A modern, well-designed, interior space fits inside this contemporary residence, fashioned with character. The stairs and railings were produced in collaboration with the architect Gianluca Montanari of Studio MGGM, who crafted a home of intelligent sophistication. The staircase is the centerpiece of this exceptional building.







Particular attention was paid to all aspects of design, including materials selected and production methods. The hand-troweled dark grey resin contrasts with the transparency of the glass, elevating a crude, industrial detail to distinction. Installation templates

were made and delivered to the jobsite so other trades could continue their work; this facilitated accurate assembly, and tailored the staircase to the space. The result? A masterpiece that is the undisputed focal-point of this home's interior.

02

BRILLIANT USE OF SPACE

Set within a loft in Milan, this staircase connects the basement, the ground floor, and a mezzanine overlooking the open living space.

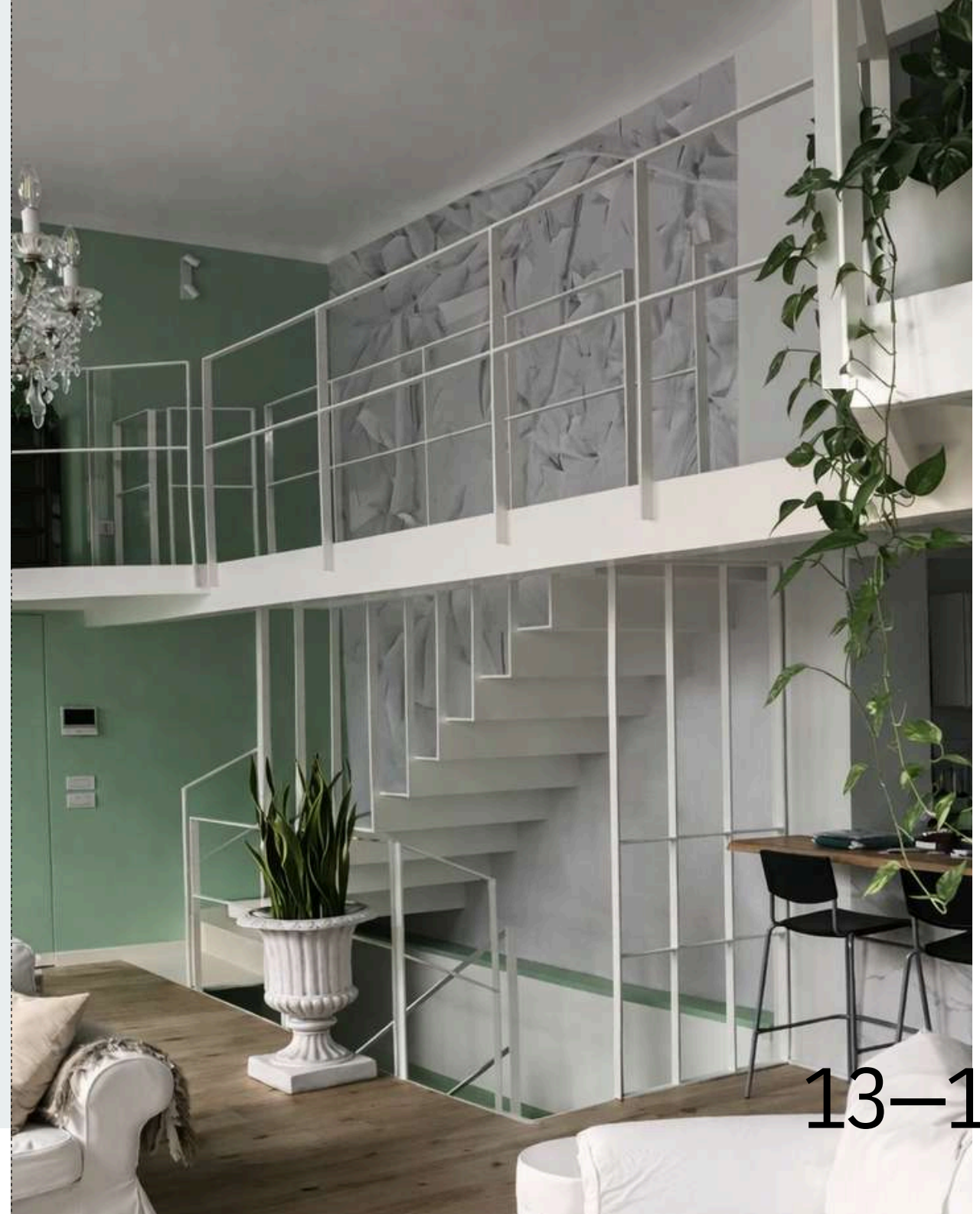
Entirely made of iron and finished in white, it defines the interior with lightness, precision, and a clear contemporary character.





Its slim design and essential lines reflect the minimal spirit of the home, while subtle classical references add a refined decorative touch.

Warm oak flooring provides a natural contrast, enhancing the purity of the white metal structure and the overall sense of understated elegance.



03

TECHNICAL VIRTUOSITY

The Bank of China moved their New York headquarters to a new building on a corner lot in Flushing, Queens. Inside, substantial street frontage was dedicated to the staircase, bringing customers from the ground floor to safe-deposit boxes downstairs.





TECHNICAL VIRTUOSITY

The two levels connect using a curving staircase designed, manufactured and installed entirely by Interbau.

Each side of the staircase was constructed from two parallel ribbons of stainless steel, slightly curved to different radii and welded together, two inches apart; the curved glass railing fit neatly inside that space. The sinuous form and clean lines of the staircase leave an elegant trace against the smooth stone and drywall.

The stainless steel railing attaches to every piece of curved glass with customized brackets, extending beyond both first and last treads for code-compliance.

16–17

The treads are made from three layers of extra-clear glass, tempered and laminated; Pei Partnership Architects specified that the top surface have a non-skid frit pattern and a frosted interlayer. This staircase brings nimble finesse to a professional setting.



04

DIVERGENT LINES

Like a butterfly unfurling its wings, this staircase opens, allowing light to shimmer through the multiple levels of this house.



DIVERGENT LINES

Interbau and the architect, Lucia Silli worked together to integrate form and structure. The landings were widened and angled to welcome this design. The staircase itself anchors to the wall in discreet locations, allowing the edge of the staircase to float freely. The overlapping steel stairs were welded and painted on-site. The steel sheet has sound-absorbing material under the treads which muffle footfalls.



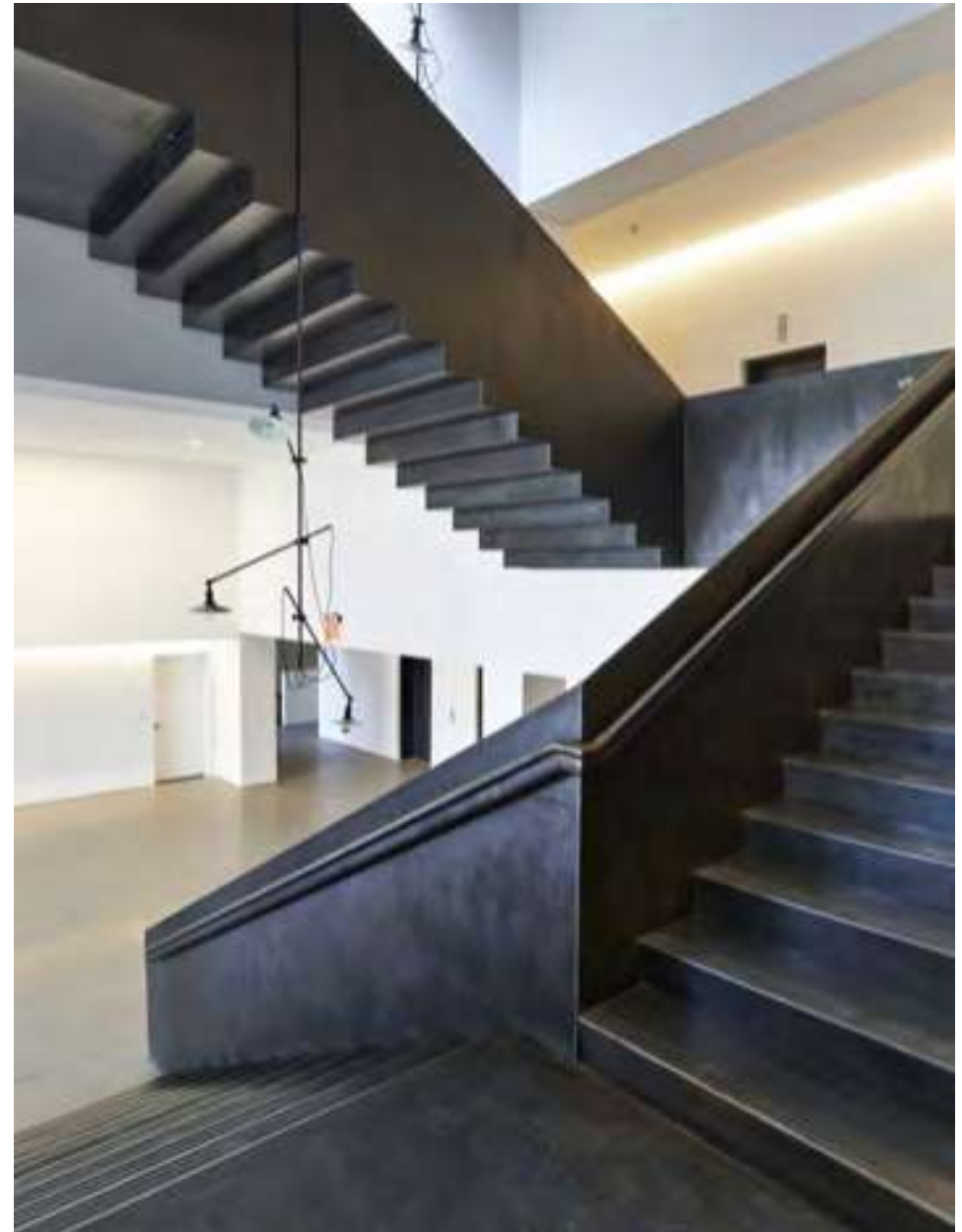


05

A SCULPTURE AT THE WORLD'S CORE

We are justifiably proud of this project: Interbau brought high-design to a soaring space in the Big Apple.

The client, Spring Studios, hosts glamorous events throughout the year. These stairs are on permanent display at film festivals, product introductions, and fashion shows, visible to thousands of people each year.





A SCULPTURE AT THE WORLD'SCORE

Tribeca is a vibrant neighborhood in New York City. The glass façade of Spring Studios greets residents and visitors alike in front of the Holland Tunnel traffic circle. 150,000 square feet of space lie inside this renovated building for galleries, events, cultural affairs, film and photography studios. Interbau's three staircases pierce through four floors of this space, linking the entrance to the roof deck. The Italian architect,

Aldo Andreoli of AA Studio conceived the impossible: a massive staircase that would appear to float, effortlessly, in the volume.

The staircases were fabricated with over twelve tons of steel; Interbau worked closely with engineers to ensure that the structural connections were concealed, permitting Andreoli's dream to become reality.

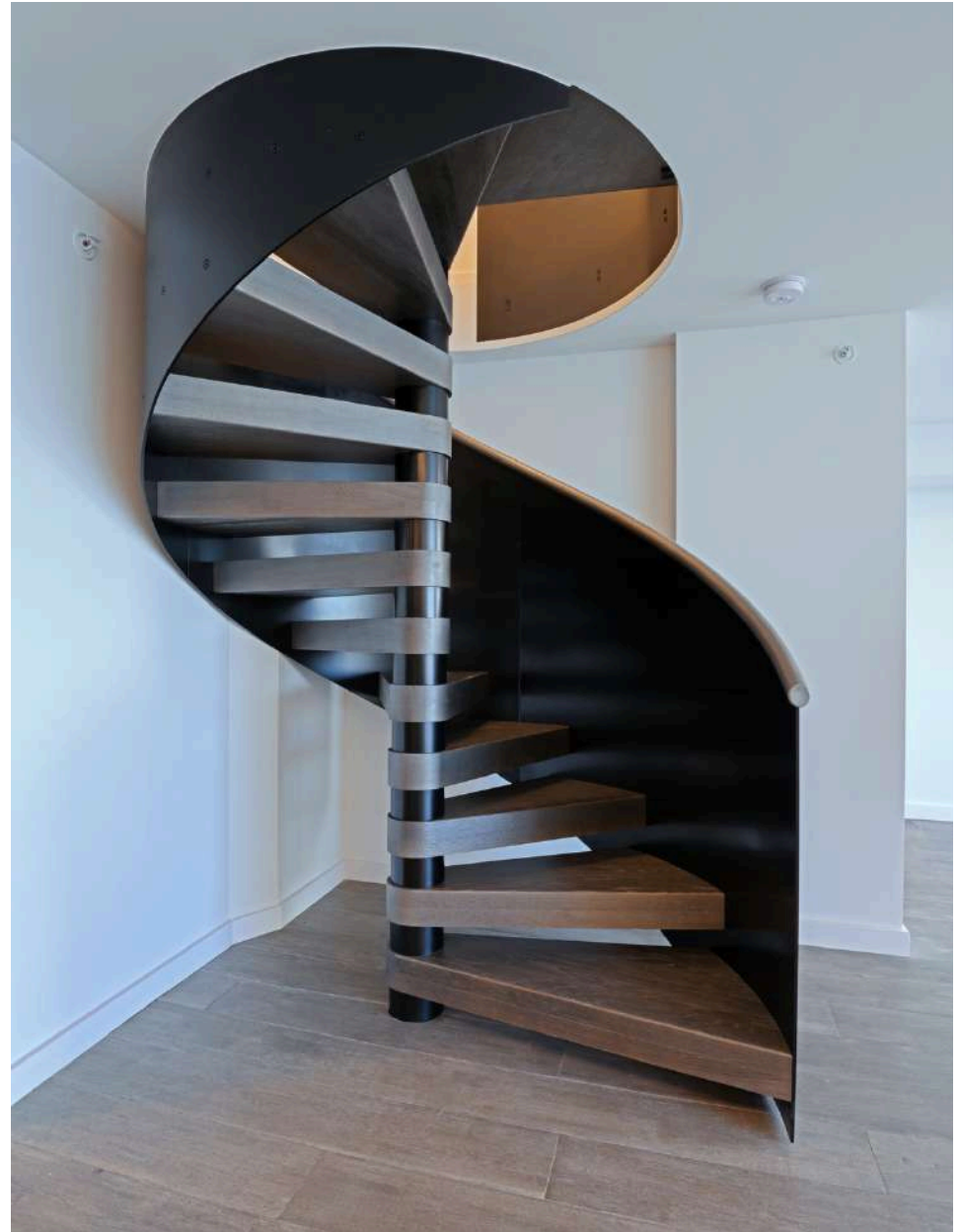
Natural materials define the space. The stairs are made completely from blackened steel, leaving the subtle imperfections of the iron to show through; even the penetration welds that hold the steel together are left intentionally in view. This gives the staircase a rough, minimalist effect; it borders on the industrial, but the curated details elevate the design. You are transported to a place — in the city, yet somehow apart — while walking on the stairs and looking through the tall windows.



06

*SMALL,
WITH
PERSONALITY*

Set within an oceanfront apartment in Miami, this spiral staircase rises against a backdrop of white walls and expansive views of the downtown skyline.



SMALL, WITH PERSONALITY

Its generous dark oak treads, matched to the flooring, give the structure a strong and substantial presence.

The railing is formed by a sequence of curved iron panels fixed to the outer edge of each step, creating a bold graphic rhythm softened by a wooden handrail.

The contrast between black iron, white surfaces, and dark oak defines the staircase with clarity and elegance, while the large window behind enhances its sculptural character.

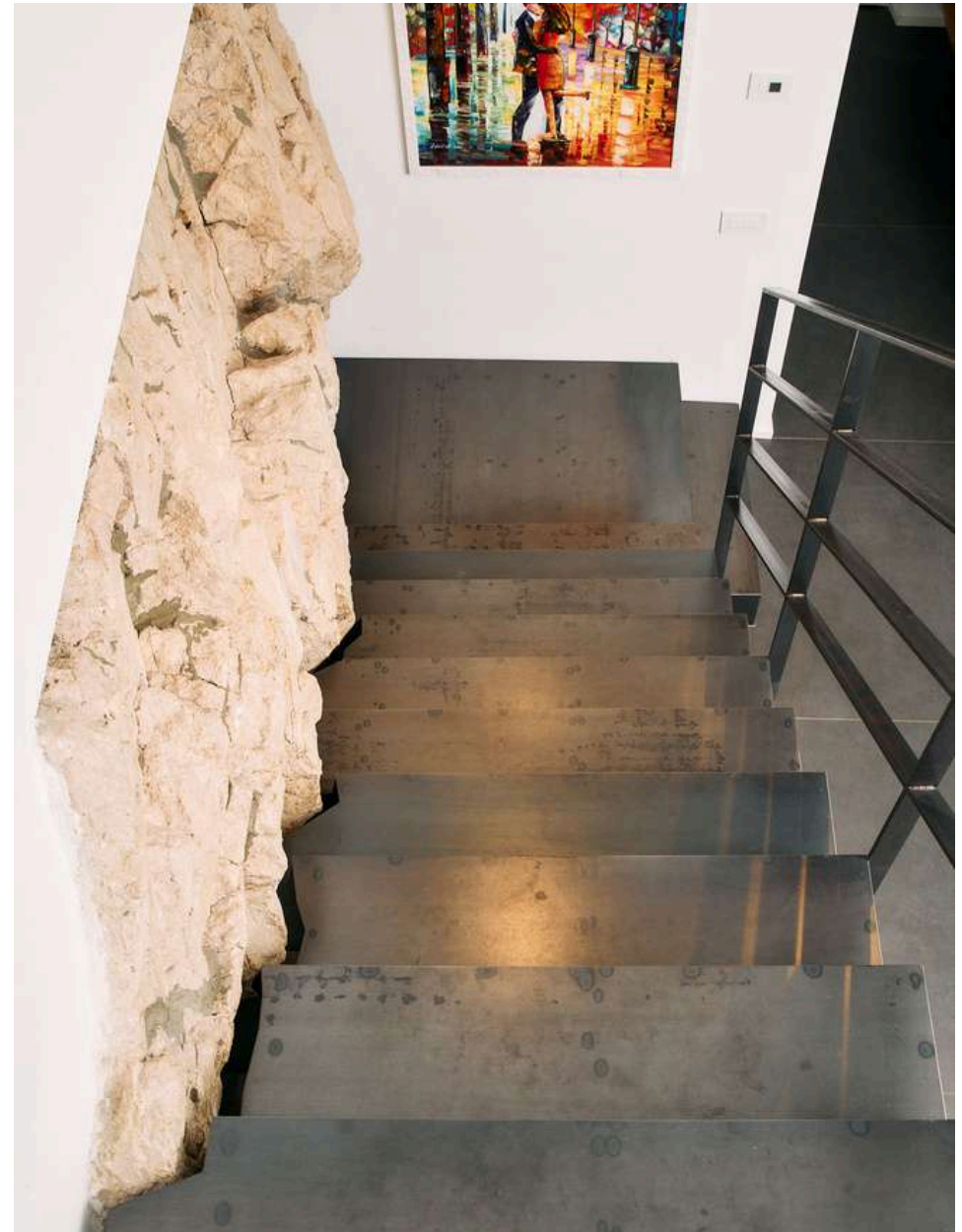




07

MINIMAL STAIR, LIVING ROCK

Set in a mountain home overlooking Lake Garda, this staircase connects the ground floor to a mezzanine open to the living area.



*MINIMAL
STAIR,
LIVING
ROCK*

Its most distinctive feature is the dialogue with the natural rock around which the house was built, left visible as part of the interior architecture.

The entire structure, including each tread, was carefully shaped to follow the irregular profile of the stone, turning a functional element into a highly site-specific design gesture.





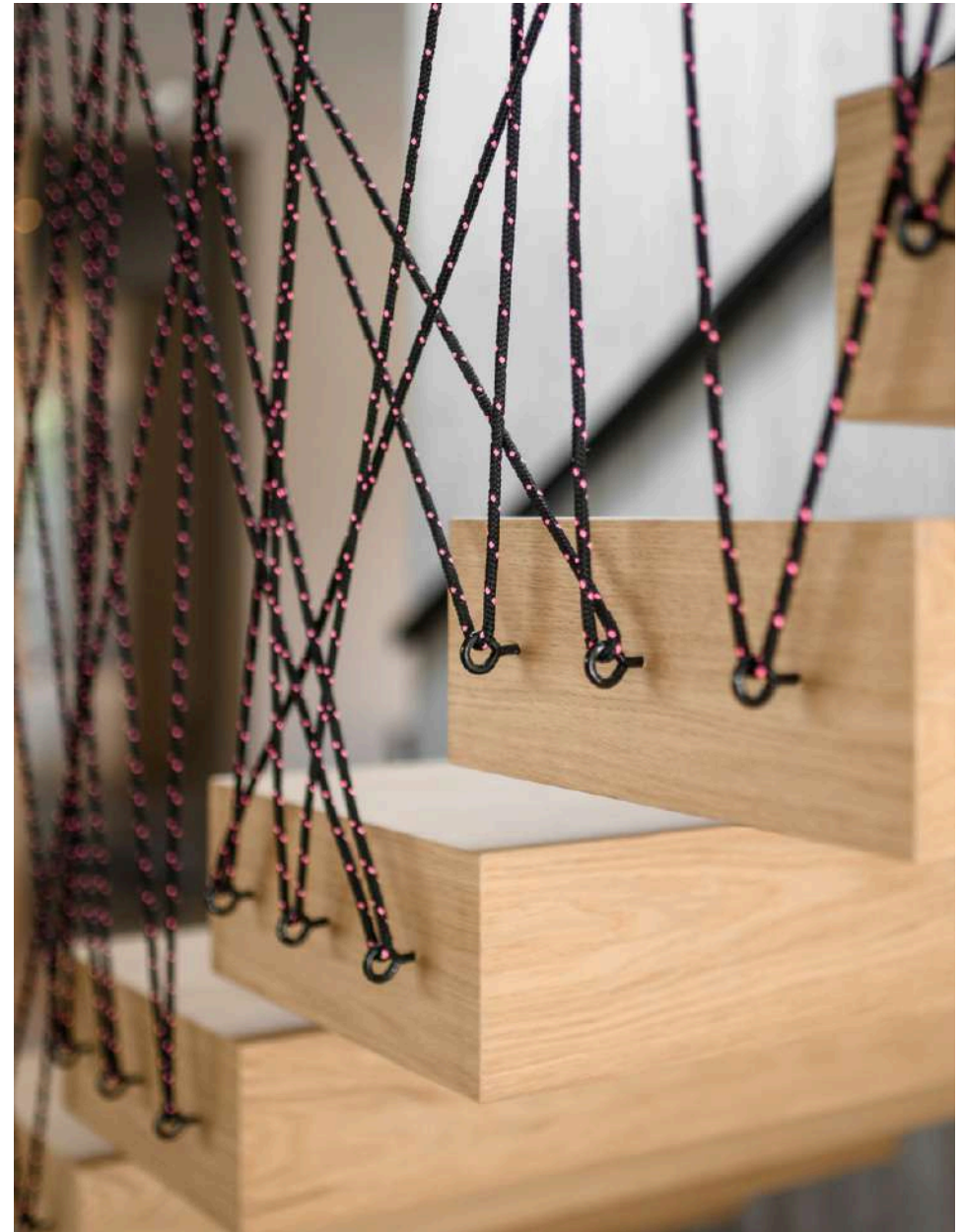
Crafted in dark raw iron with no paint finish, the staircase stands in sharp contrast to the warm hazel tones of the rock, highlighting the clarity of its clean geometry.



08

MAIN ATTRACTION

Set in the lobby of a design hotel in South Tyrol, this staircase rises as a light and striking architectural presence within the mountain setting.



MAIN ATTRACTION

The cantilevered oak treads are fixed to a new concrete wall, combining structural precision with the warmth of natural wood.

Its defining feature is the railing: a composition of cords inspired by climbing ropes, stretched from the edge of each step to the ceiling.

Interwoven by the architect himself, these lines create a dynamic graphic pattern that gives the staircase a strong identity, balancing alpine references with a refined contemporary language.



09

CLASSIC COMPANIONS

At the center of an important house in the hills of Trento, this staircase complements the living room, and ushers residents to their bedrooms at night.



CLASSIC COMPANIONS

It is a classic form: white steel stringers and simple railings with larch wood treads. Interbau manufactured a staircase that has distinguished elements: handrails finished in deliberate proportions; treads joined to the structure with no visible connections.



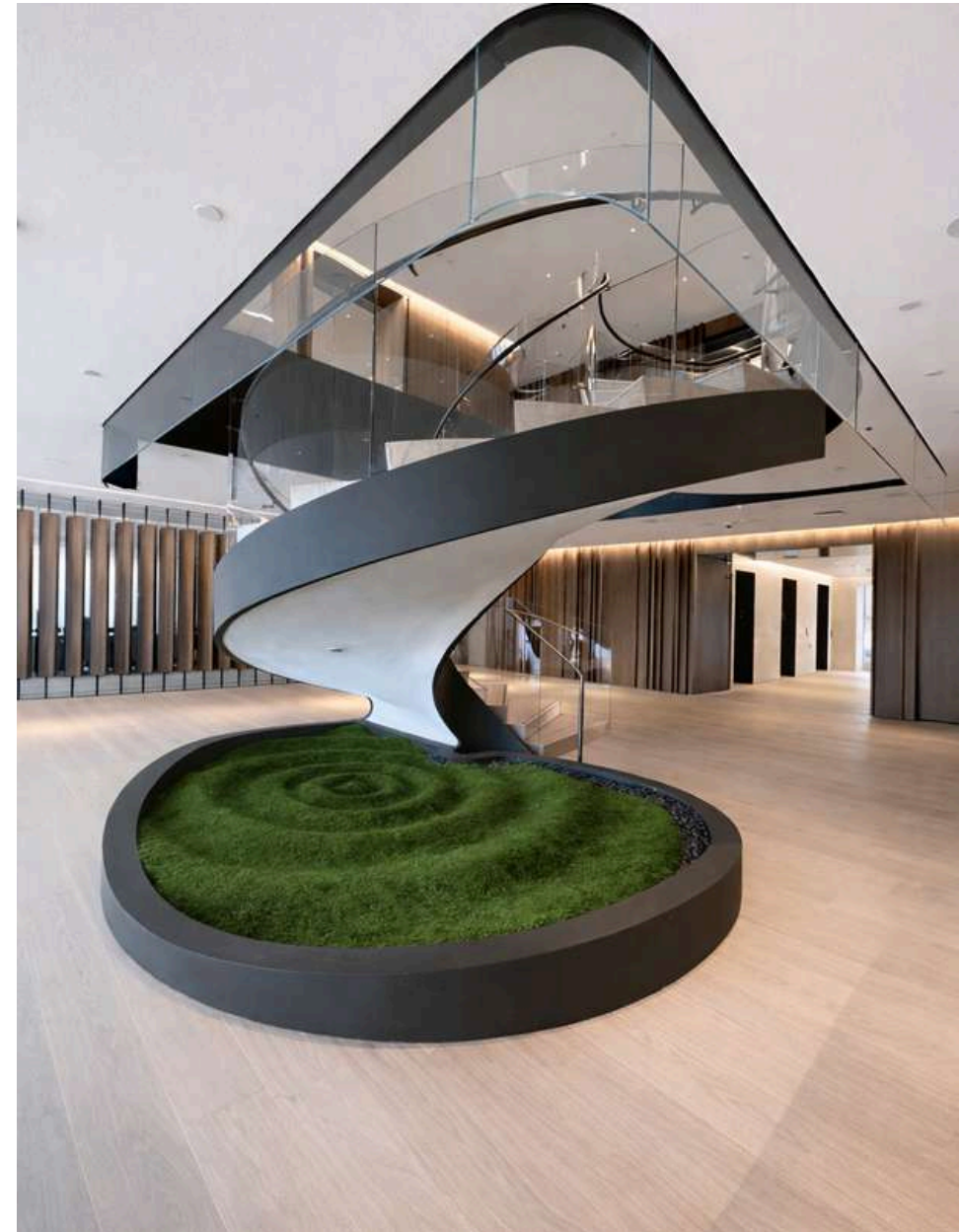


10

A STAIRCASE ABOVE THE BLUE

Set on the 52nd floor of a tower overlooking Miami Bay, the ocean, and the Gulf, this staircase connects the two levels of a luxury office with exceptional sculptural presence.

Developed in collaboration with Bella Stairs of Miami, the project is defined by flowing curves and changing diameters, forming a helical structure that twists around itself in a continuous and highly complex movement.





LUMINOUS CADENCE

The metal structure is finished in Blackened — an aged satin bronze with a dark, textured appearance — giving the staircase depth, character, and a refined material richness. Wooden treads introduce warmth and balance to the composition.

Glass balustrades on both sides, together with the glass parapets at the upper landing, enhance the sense of lightness and openness, allowing the staircase to stand against the vast blue backdrop as a refined architectural centerpiece.



11

FUNDAMENTAL DIGNITY

The staircase connects the kitchen and dining room with the loft for a home built in the early 1900's. The client requested a design solution that combined strict geometry with clean lines.







FUNDAMENTAL DIGNITY

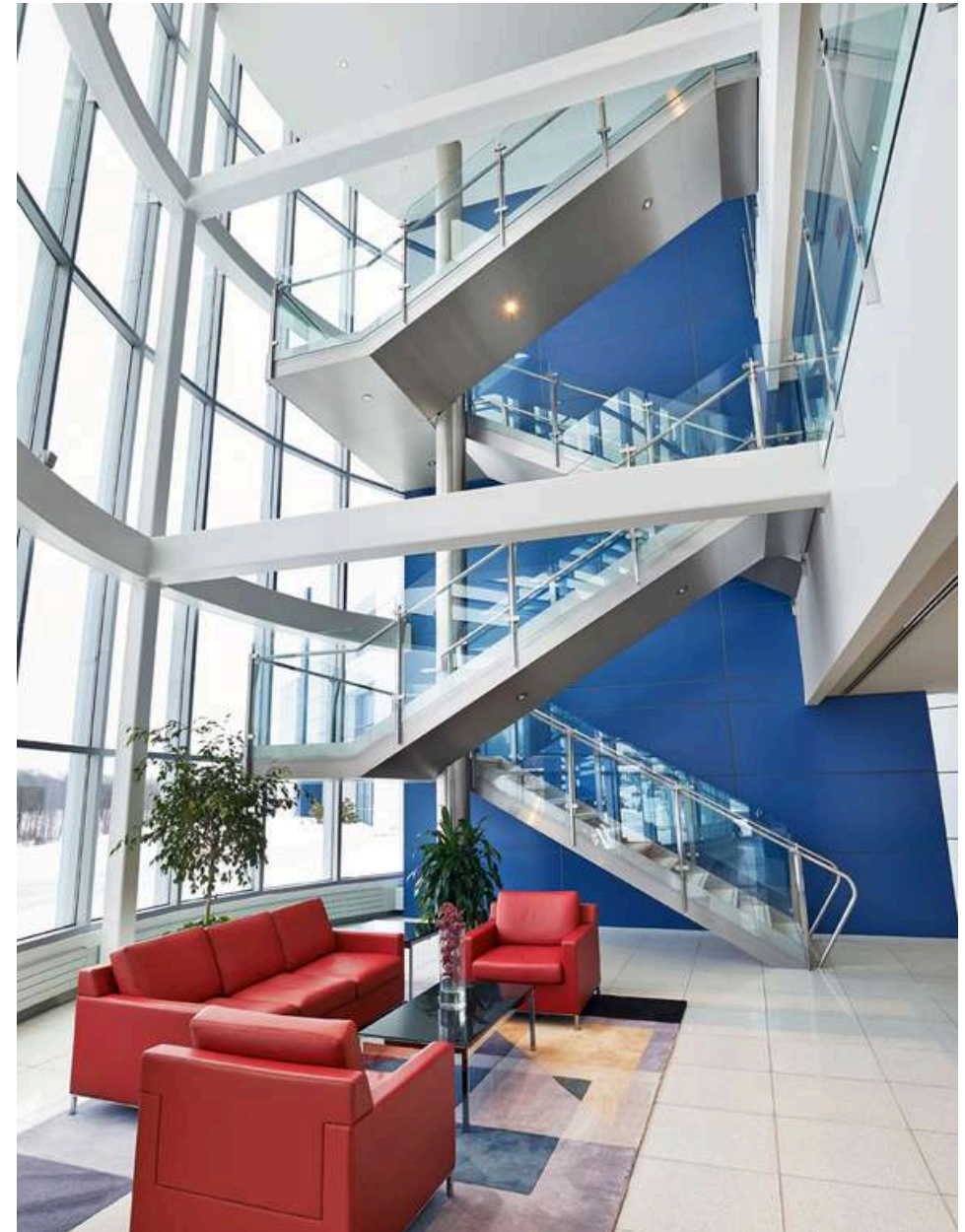
Interbau assembled a box staircase from laminated beech. Wood was chosen for its strength and light weight, so as not to overload the antique floors. Rubber-coated metal anchors transmit the dead and live loads to the side wall, but mute the sound to the bedrooms beyond. The smooth finish of hardened, white lacquer contrasts with the rugged wood of the original beams.

The glass railing completes the composition, sliding cleanly into both the staircase structure and the metal shoe at the loft.

12

AMERICAN DREAM

For this headquarters building Interbau produced a staircase as modern, technical and cutting-edge as the high-tech industry itself.





AMERICAN DREAM

Mediacom, the ninth largest cable provider in the United States, built a new headquarters — surrounded by nature, yet easily accessible to its large employee base in New Jersey and New York. The stainless steel staircase stands in one corner of the soaring lobby, linking all three floors of this 110,000 square foot building. The staircase centers on a 34' tall stainless steel column, 14" in diameter.

This custom-made structural pillar was anchored under the floor with a massive plate and supports both staircases and their cantilevered landings.

Each stainless steel stringer connects to the other using a sturdy tread plate bolted to both sides. The terrazzo tread covers the tread plate, while removable stainless steel screens slide into place to diffuse lighting that brightens every riser. The glass guardrail system connects to the stair with custom stanchions, clamps and a tubular handrail; that same stanchion and guardrail scheme secures over 250 linear feet of gallery edge.





13

SUSPENDED IN NATURE

A penthouse apartment in the village center overlooks the ski runs of the nearby mountains.

Interbau was instrumental in designing this staircase to allow expansive views from all corners of the apartment.





SUSPENDED IN NATURE

Mountain and sky enter the apartment through large glass doors. The appealing geometry of the box staircase enhances the vista, its order contrasting with nature. The architect's concept was to import rational lines, softened by wood, on a diagonal. The staircase body would visually separate inside from out, private from public and the kitchen from the living room.

74—75



14

SHADOWS AND LIGHT

Two materials – blackened steel and blonde wood – combine with discrete surfaces and sharp lines to harmonize with the client's minimalist tone.





SHADOWS AND LIGHT

Expressions of art and culture permeate this sophisticated home. Interbau crafted a balanced staircase and railing, linking spatial volumes that alternate from rough to refined.

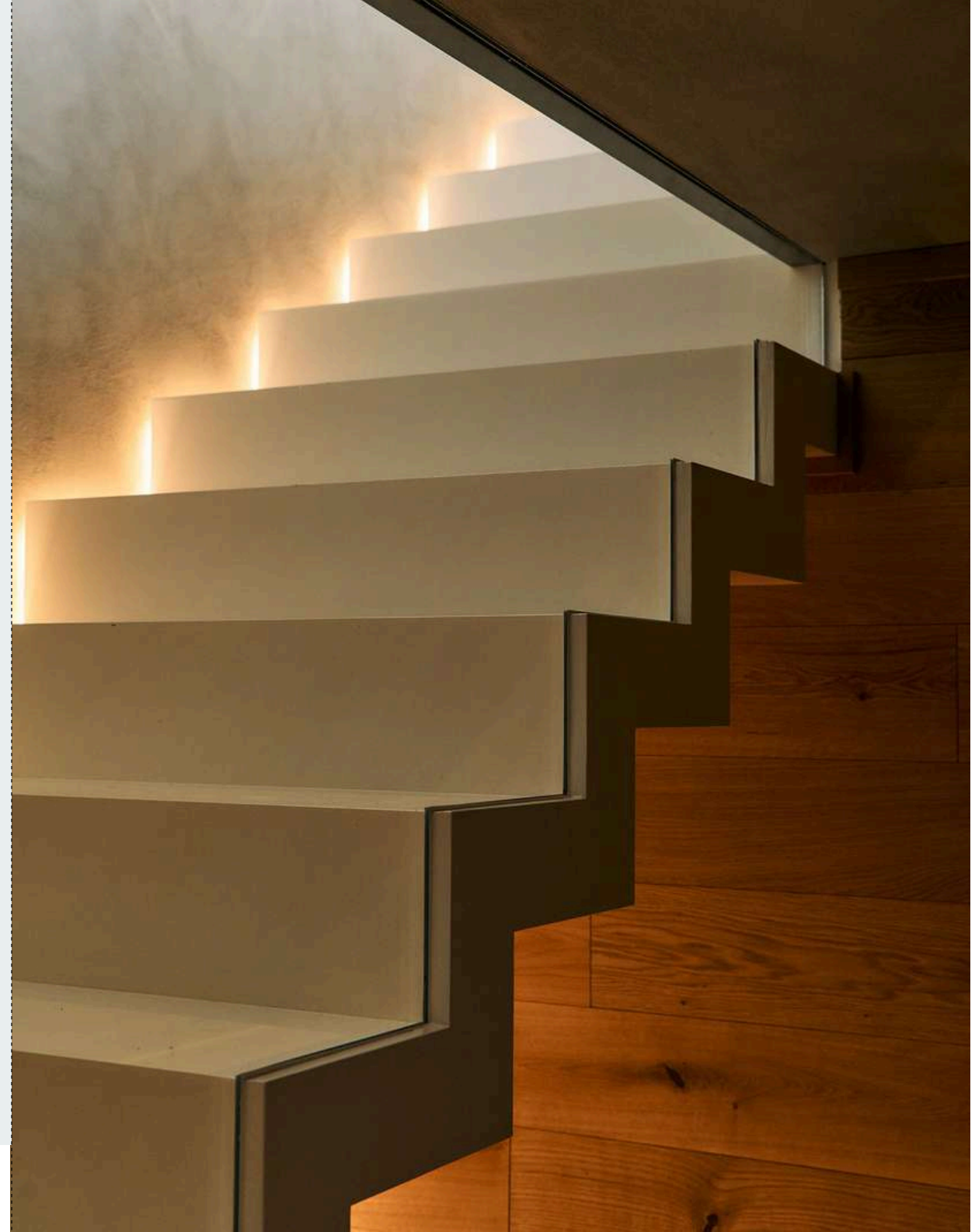
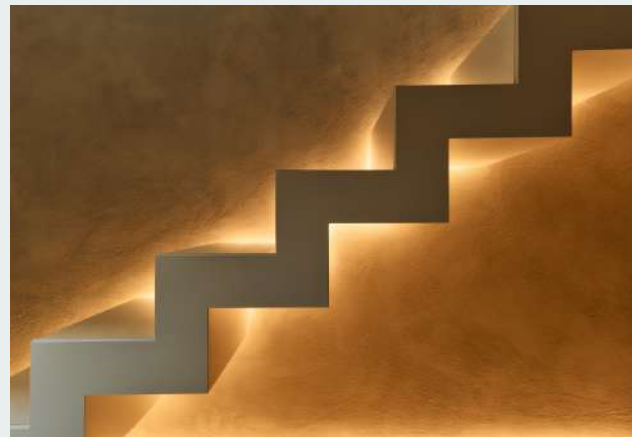
15

SUBTERRANEAN ASCENT

Descending from the ground floor into an underground wine cellar, this staircase leads to a private space dedicated to the ageing and preservation of fine wines.

Its white lacquered metal structure stands out against a grey wall, expressing a clean and precise architectural language.

Glass balustrades reinforce the sense of lightness, while a glazed partition separates the staircase from the cellar, allowing the space to remain temperature controlled. Below, oak cladding defines the atmosphere of the cellar, adding warmth and depth to a setting where sharp lines and refined materials meet with understated elegance..

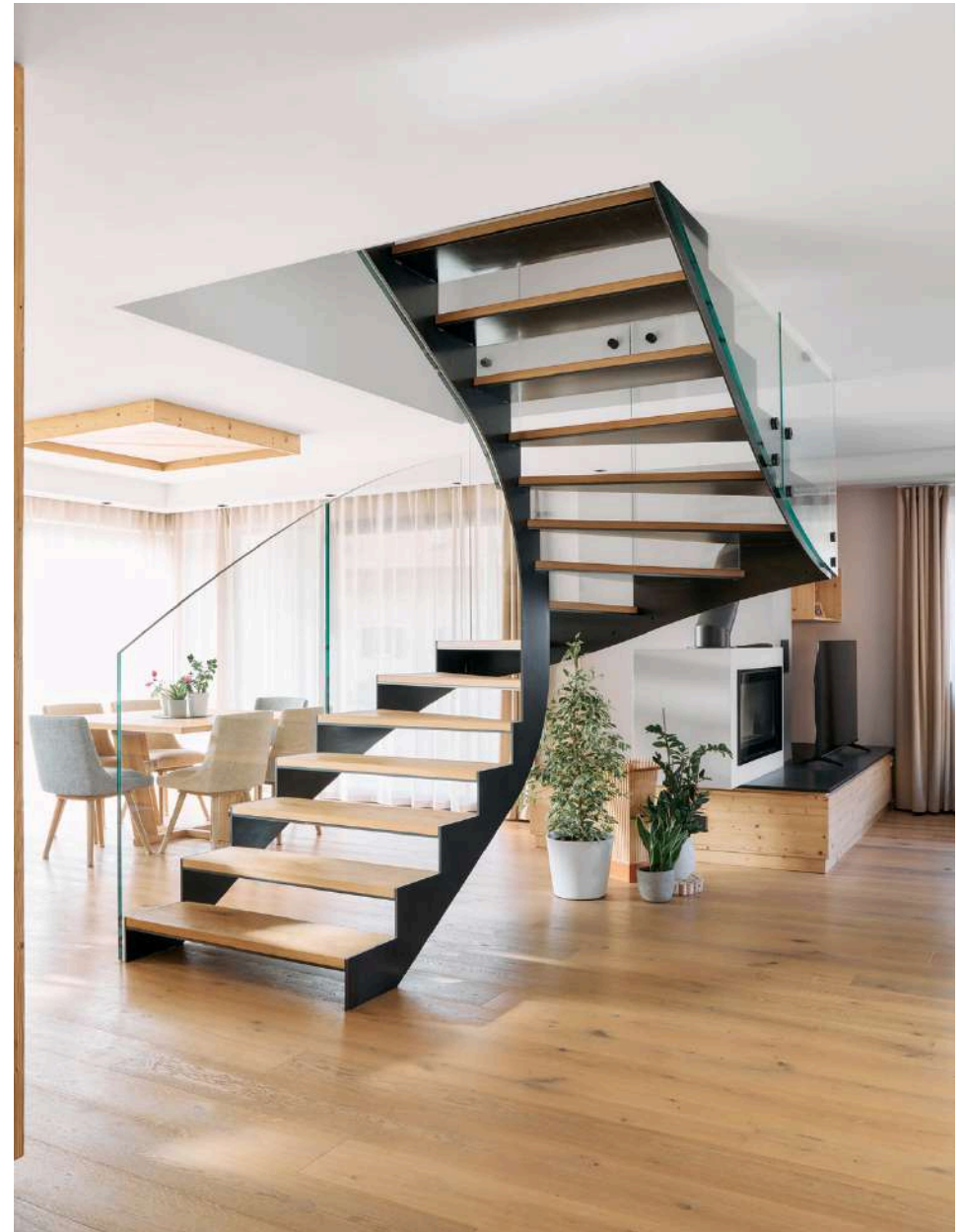




15

SUSPENDED TRANSPARENCY

Set within a mountain home in a valley of Trentino, this staircase is defined by a warm and balanced material palette, where natural oak flooring and wooden furnishings shape the atmosphere of the living space.

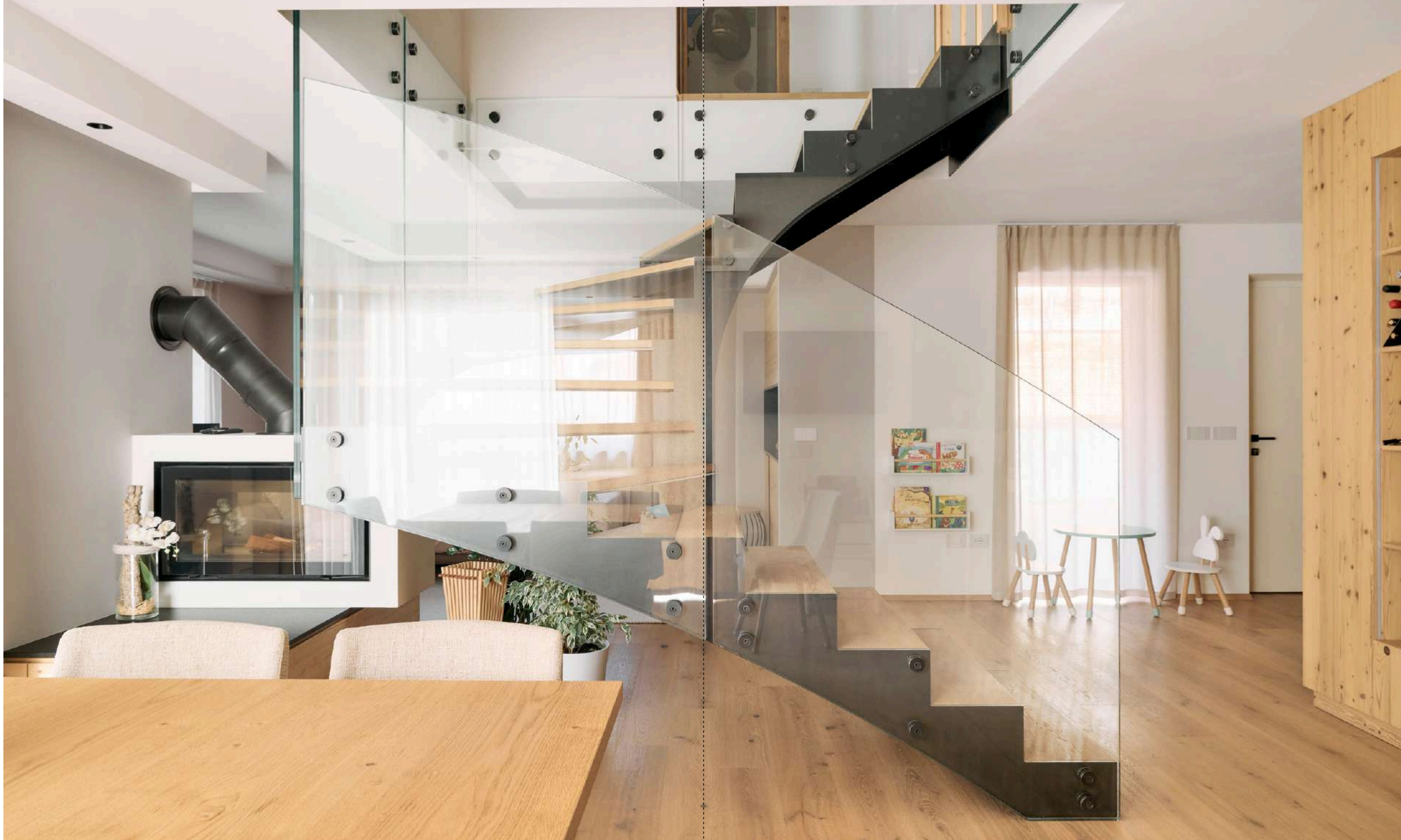


SUSPENDED TRANSPARENCY

Completely open to the living area, the staircase has no connection to the side walls and no supporting elements reaching the floor, preserving the purity and lightness of the design.

Its most distinctive feature lies in the structural role of the glass panels, which act as true tension elements, suspending the staircase and making its remarkable engineering precision an integral part of its architectural expression.



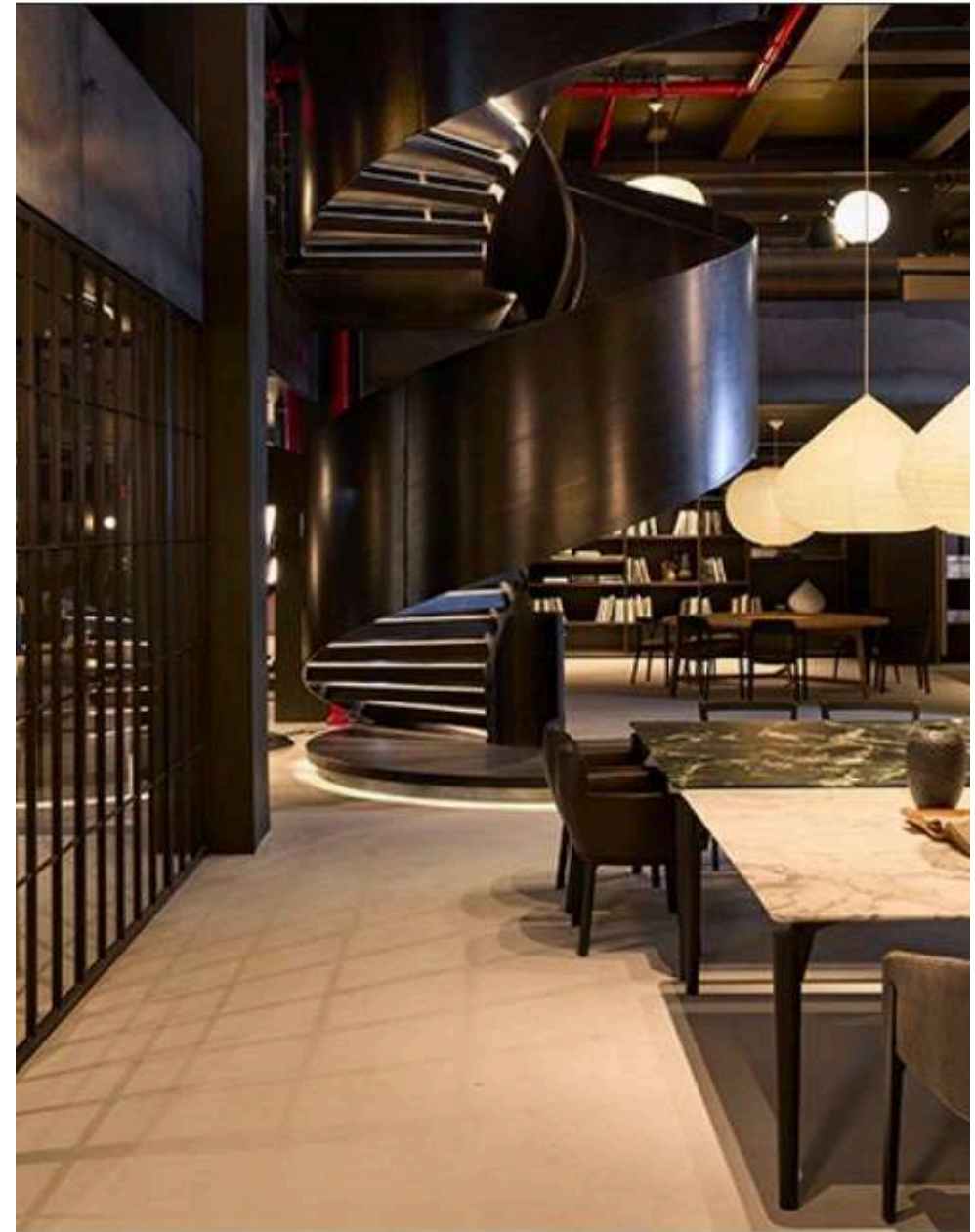


16

PATRIOTIC INDUSTRY, ITALIAN APPEAL

Set on Madison Avenue in Manhattan, this staircase connects the ground floor to a mezzanine and continues upward to the second floor within the showroom of a leading Italian kitchen brand.

Created in collaboration with Teknoarredo of Miami, the project is defined by a helical central spine and a matching outer balustrade, both shaping the staircase with a strong sculptural rhythm.





*PATRIOTIC
INDUSTRY,
ITALIAN APPEAL*

The entire structure is made of black steel, expressing a bold and essential material presence, while the metal treads are enhanced by integrated lighting that marks each step with precision.

Open on every side, the staircase rises from a defined platform base and preserves full visual connection with the showroom below, becoming both a functional link and a striking architectural centerpiece.

Rising from a defined platform base, the staircase remains open on every side, preserving a continuous visual relationship with the showroom below. This transparency allows the full space to be perceived at once, turning the staircase into both a functional connection and a central design feature within the interior.

More than a circulation element, the staircase becomes a statement piece: a dynamic architectural presence that combines craftsmanship, structure, and light in a composition of strong contemporary character.

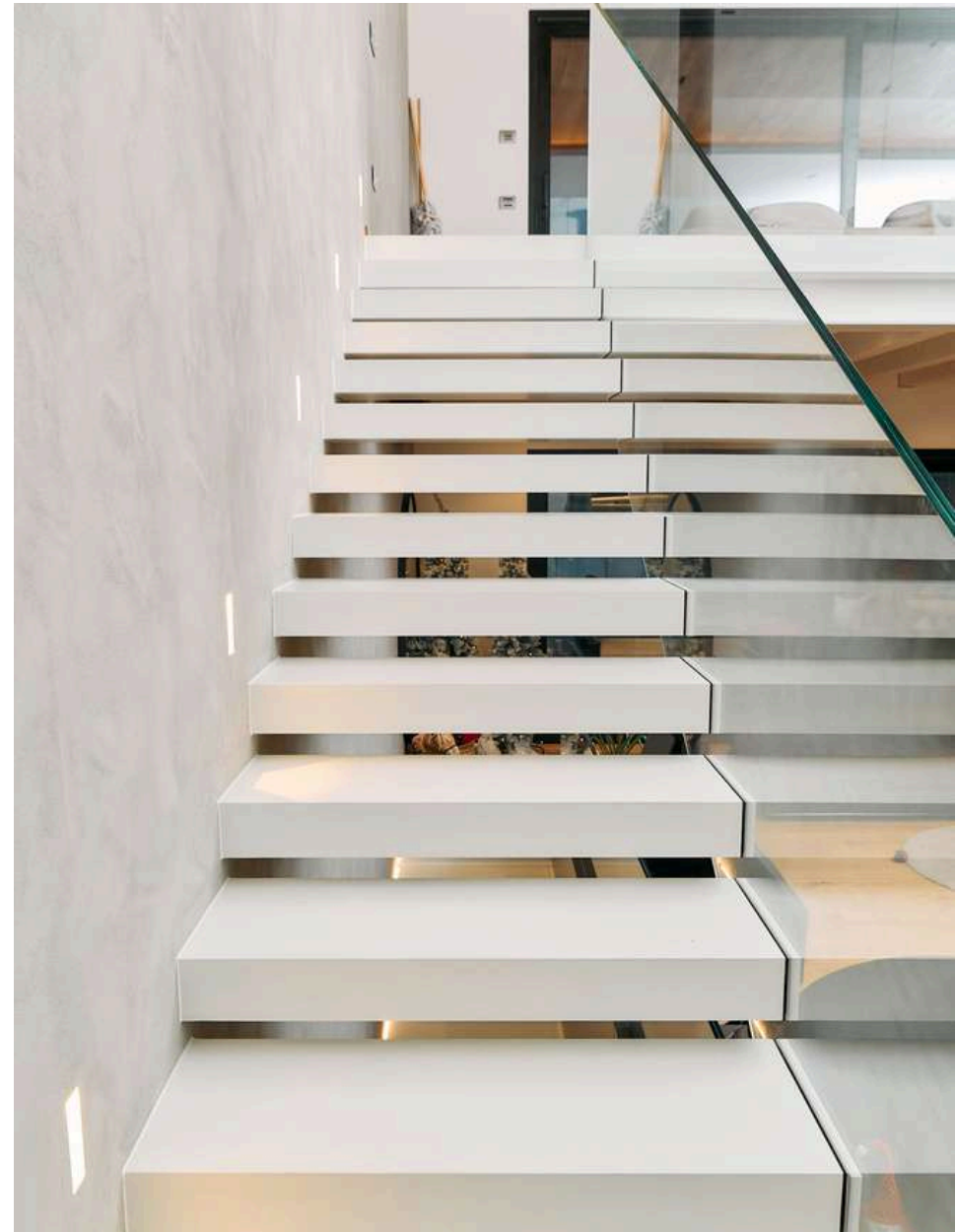


17

SIMPLE FUNCTIONALITY

Set within a refined living space, this staircase connects the ground floor to a mezzanine with a composition defined by clarity, lightness, and precision.

The staircase is formed by a single straight flight of cantilevered treads fixed to the wall, creating a clean and essential architectural gesture. Finished in white, the treads enhance the purity of the design and integrate seamlessly with the interior.







SIMPLE FUNCTIONALITY

Its defining feature is a single uninterrupted glass panel running from the first step to the top landing. Acting both as a safety balustrade and as a structural stiffening element, it gives the staircase a remarkable sense of transparency and technical sophistication.

Starting from a platform in contrast with the white treads, the staircase is perfectly integrated into a high-end interior where every detail reflects a strong design vision and an understated sense of luxury..

18

CONTEMPORARY MINIMALISM

Interbau crafted this staircase for the Lentsch Winery, along the Appiano wine road in northern Italy. This boutique is the public face for the winery; specifically designed for wine tastings, it has a wine cellar and hosts guests from a wide area.





CONTEMPORARY MINIMALISM

The staircase leads up to the outdoor seating area; the entire store can be seen from the elevated platform. The two blackened steel stringers are joined by austere steel treads, welded cleanly from below. Interbau also manufactured the structure for the mezzanine and integrated shoe.

Guardrails, made from tempered and laminated glass, fit cleanly into both the staircase and platform above.

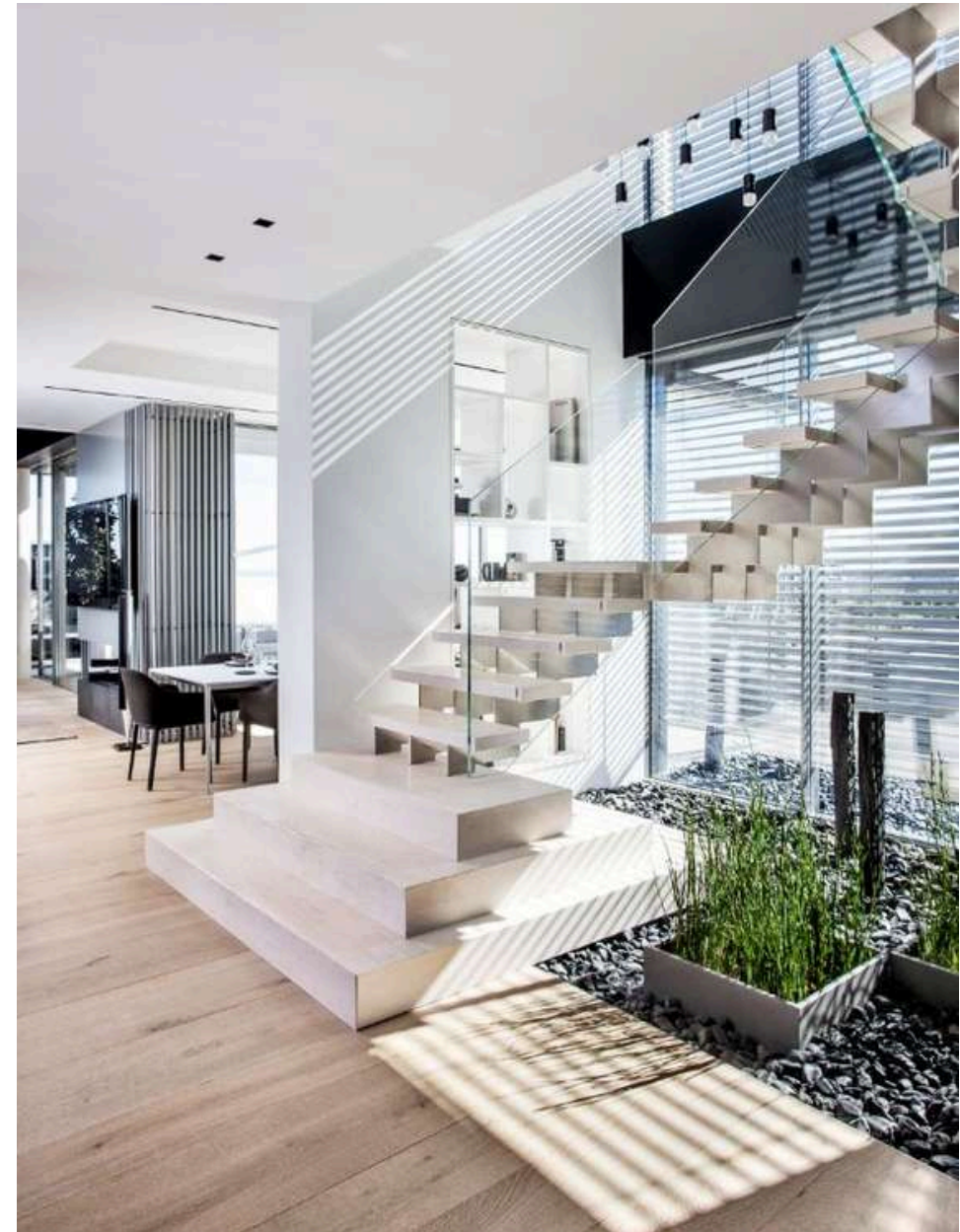


19

WRAPPED IN A SHELL

Set within a penthouse in Madrid, this staircase connects the upper floor to the terraces overlooking the city, becoming a refined link between interior space and open views.

The composition begins from a marble platform and continues with a sequence of marble-clad treads, expressing solidity, elegance, and material continuity.



*WRAPPED
IN A
SHELL*



Glass balustrades enhance the sense of lightness, while between one step and the next the structure is subtly revealed through three satin stainless steel supports, adding precision and a refined technical character to the design.

Framed by a full-height glazed wall on one side and vertical wooden cladding on the other, the staircase is perfectly integrated into an interior of exceptional quality, where every finish contributes to a sense of understated luxury.

112–113

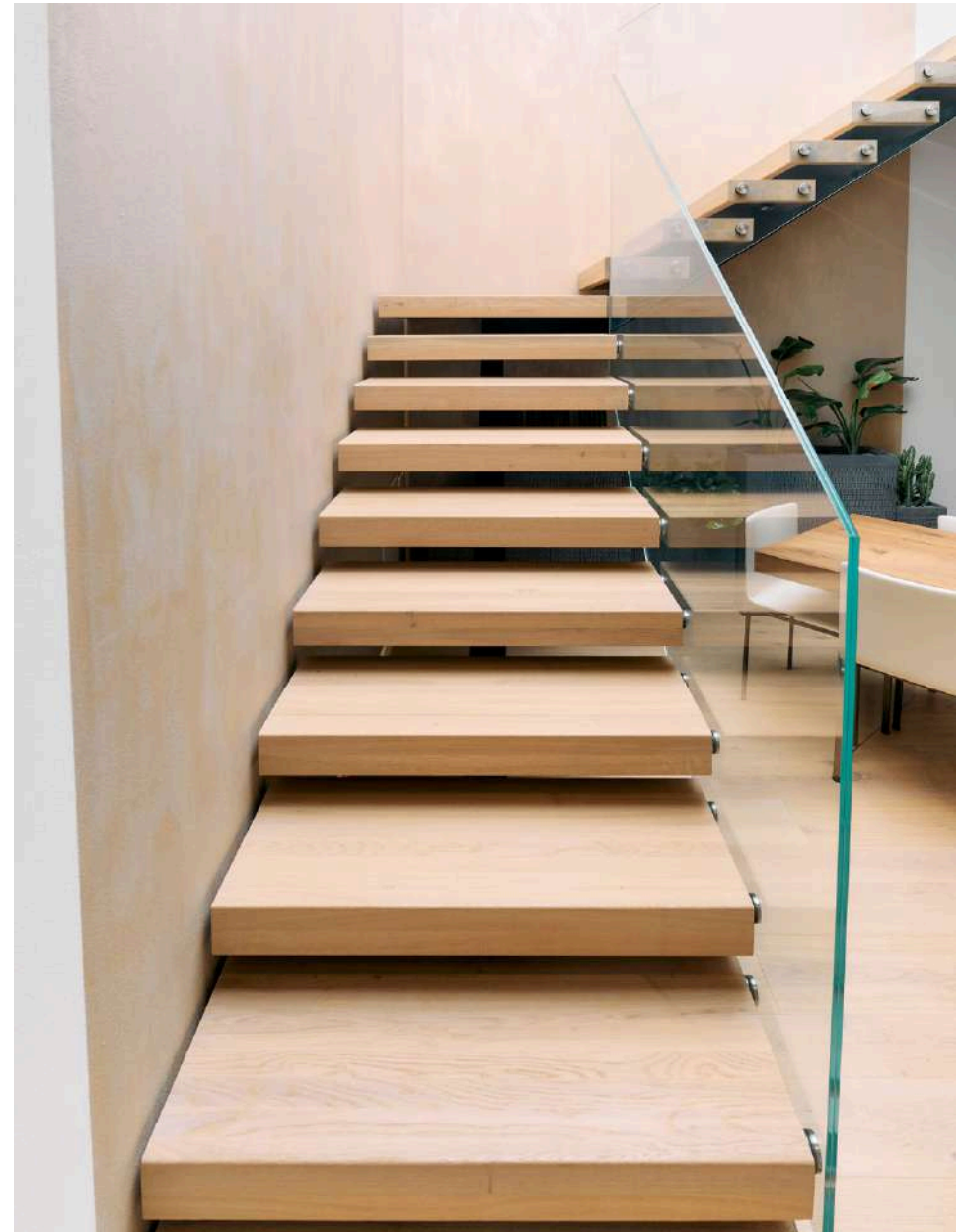


20

ALPINE WOOD, TRUE HERO

Set in Sud Tirol, this staircase connects the ground floor to the first floor, where a glazed overlook opens onto the living space below.

Its defining feature is a central tubular structure in black metal, combined with thick solid oak treads that give the staircase a strong and substantial presence.

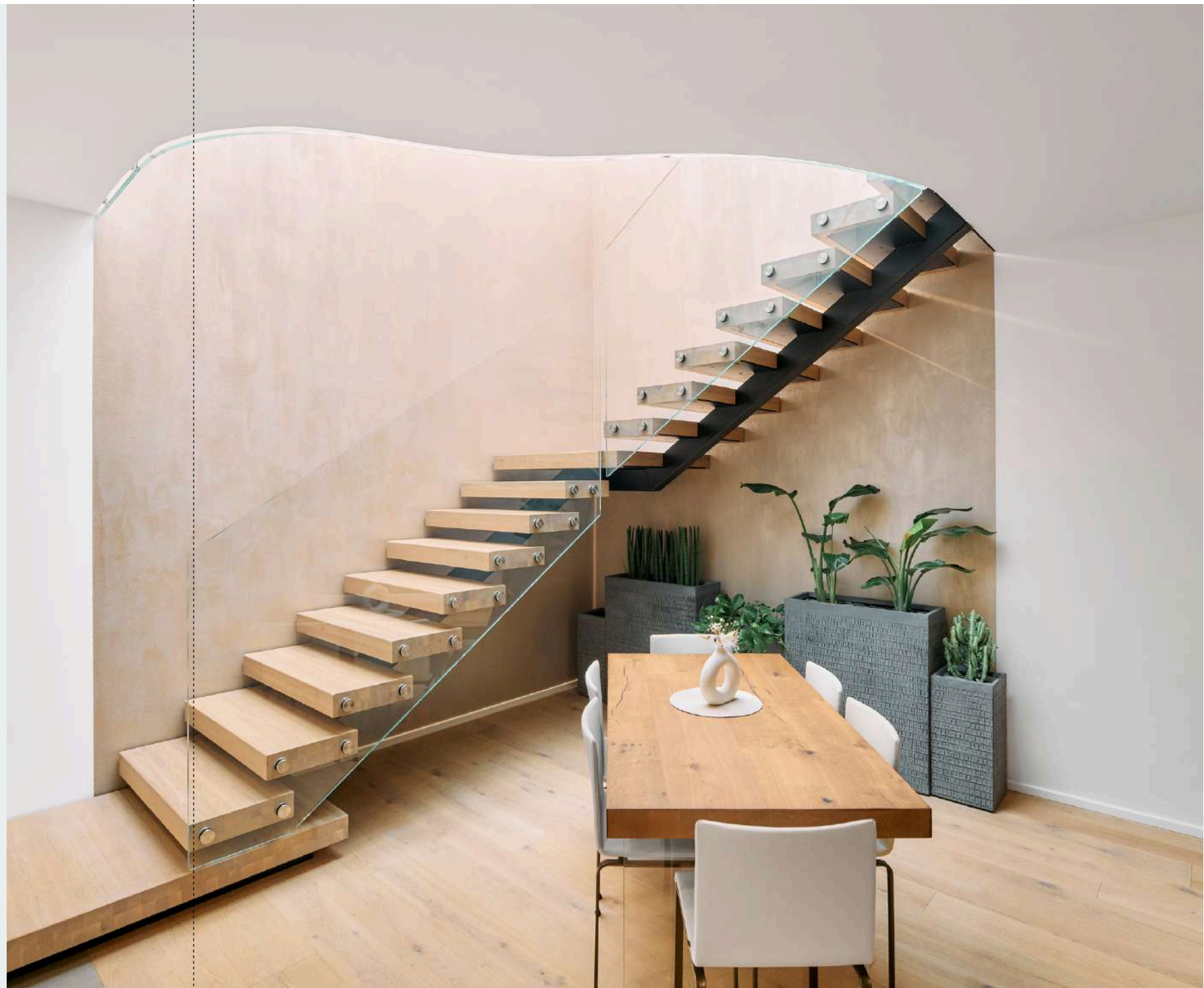




*ALPINE
WOOD,
TRUE HERO*

Glass balustrades enhance the lightness of the composition, while at the upper level a curved glass parapet forms a soft wave-like gesture, adding movement and continuity to the space.

The staircase begins from a platform base, and the underside of each tread is clad in sheet metal finished to match the central tube, reinforcing the precision of the design and the harmony between structure and material



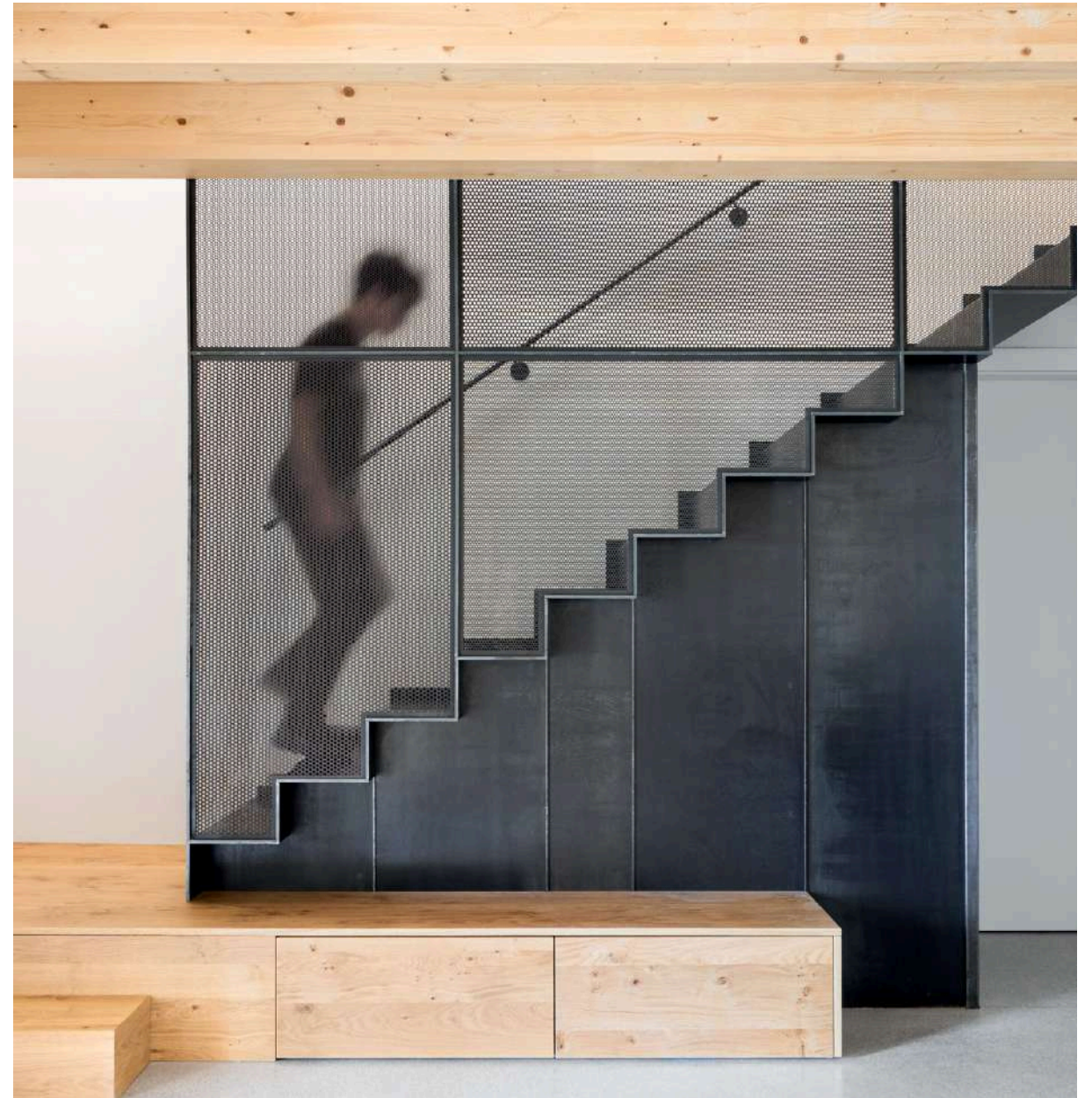


21

BETWEEN PAST AND FUTURE

Set within the home of a designer, this staircase expresses a strong and unmistakably contemporary character.

Starting from a wooden platform placed on a terrazzo floor, the staircase is built entirely in raw iron, revealing the material in its most essential and authentic form.

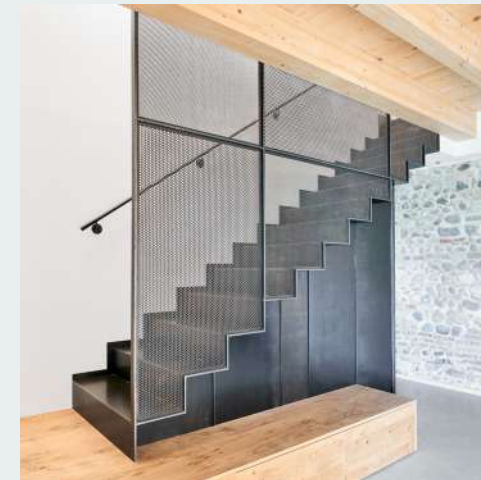




*BETWEEN
PAST
AND FUTURE*

The closed metal underside defines a compact volume beneath the stair, concealing a storage space and reinforcing the architectural presence of the structure.

Sheet metal treads continue the minimal language of the project, while the balustrade — composed of perforated metal panels — gives the staircase its most distinctive identity, combining function, texture, and graphic precision in a refined design statement.

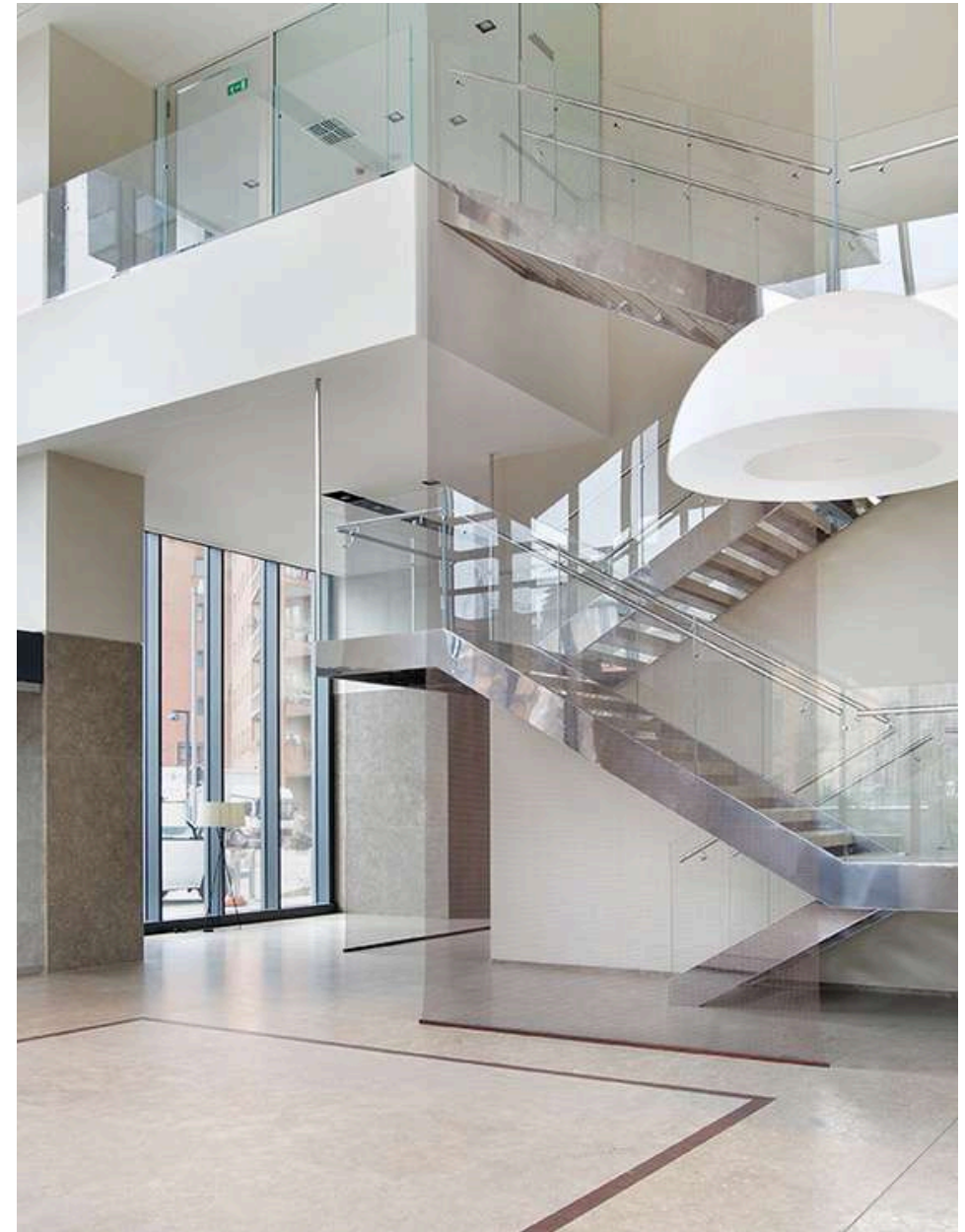


22

INSIDE BOSCO VERTICALE

Set within the lobby of Bosco Verticale in Milan, the landmark residential project designed by architect Stefano Boeri, this staircase rises in three flights to reach a meeting room, combining architectural clarity with a strong sense of prestige.

The structure is crafted in mirror-polished stainless steel, reflecting the surrounding space and giving the staircase a refined, almost immaterial presence.





*INSIDE
BOSCO
VERTICALE*

Marble treads add solidity and elegance, while extra-clear glass balustrades preserve the purity of the design and enhance its transparency.

The result is a staircase of exceptional precision and formal balance, where noble materials and clean lines define a contemporary intervention of understated luxury.

23

INDUSTRIAL OFFICE CONTRACT

Set within an office on Lake Garda, this project extends beyond the staircase to include the mezzanine and a series of bespoke interior elements, creating a unified architectural language throughout the space.

All custom-made features — including archive units and changing areas for the two owners — are crafted in natural iron and oak, combining structural clarity with the warmth of wood.

The staircase rises from the main office level to a meeting room above, establishing a strong vertical connection within the workplace.



INDUSTRIAL OFFICE CONTRACT

On both sides of the meeting room, glazed openings overlook the offices below, enhancing transparency, light, and the sense of continuity between the different levels.

The project was developed as a complete turnkey contract, with our work beginning from the raw shell and leading through to the full realization of the interior. This comprehensive approach made it possible to deliver a coherent and fully resolved space, where staircase, mezzanine, and bespoke elements all belong to one consistent design vision.



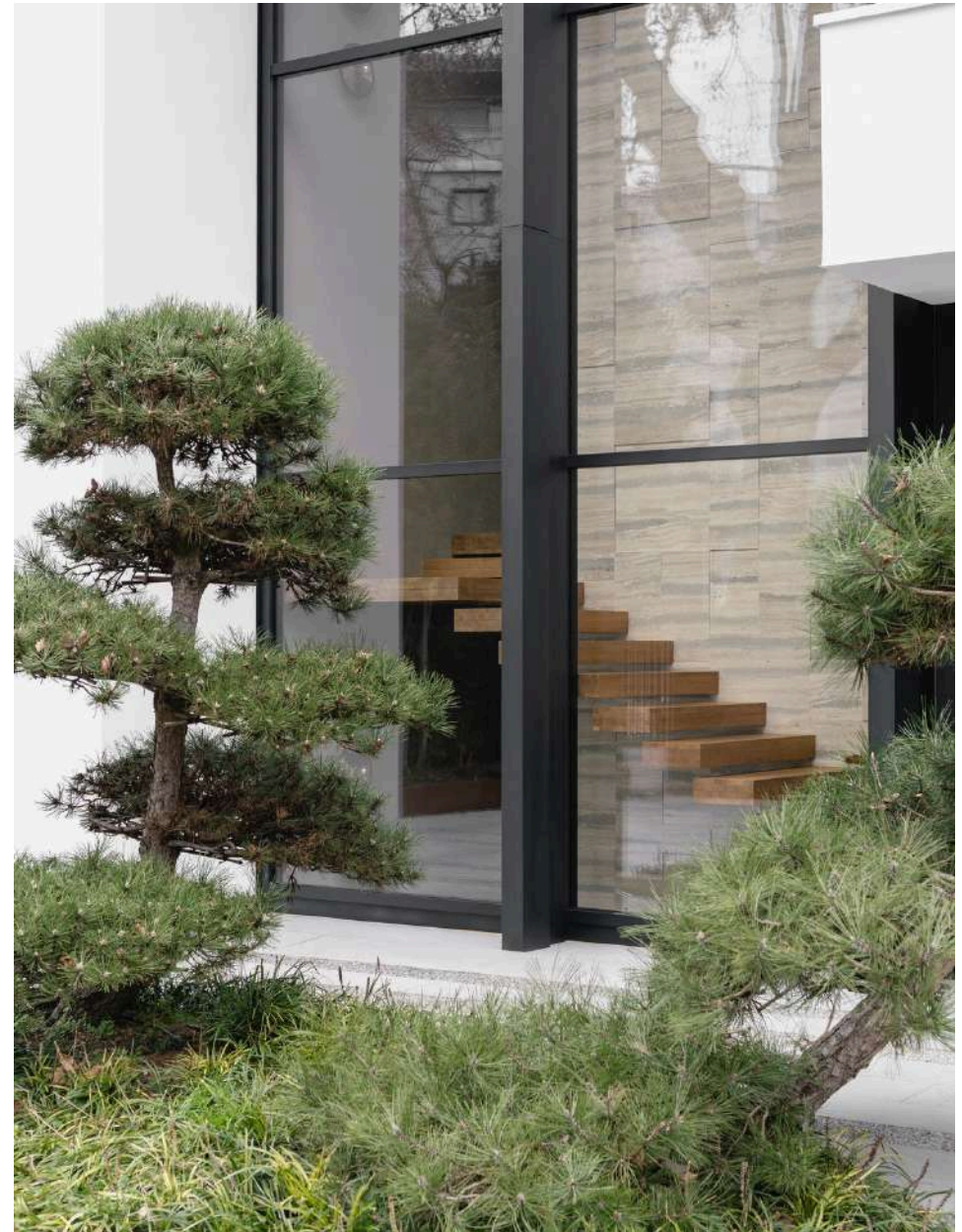


24

*FOUR
X FOUR*

Set within a highly contemporary two-storey villa, this staircase is conceived as a light and sculptural presence at the heart of the interior.

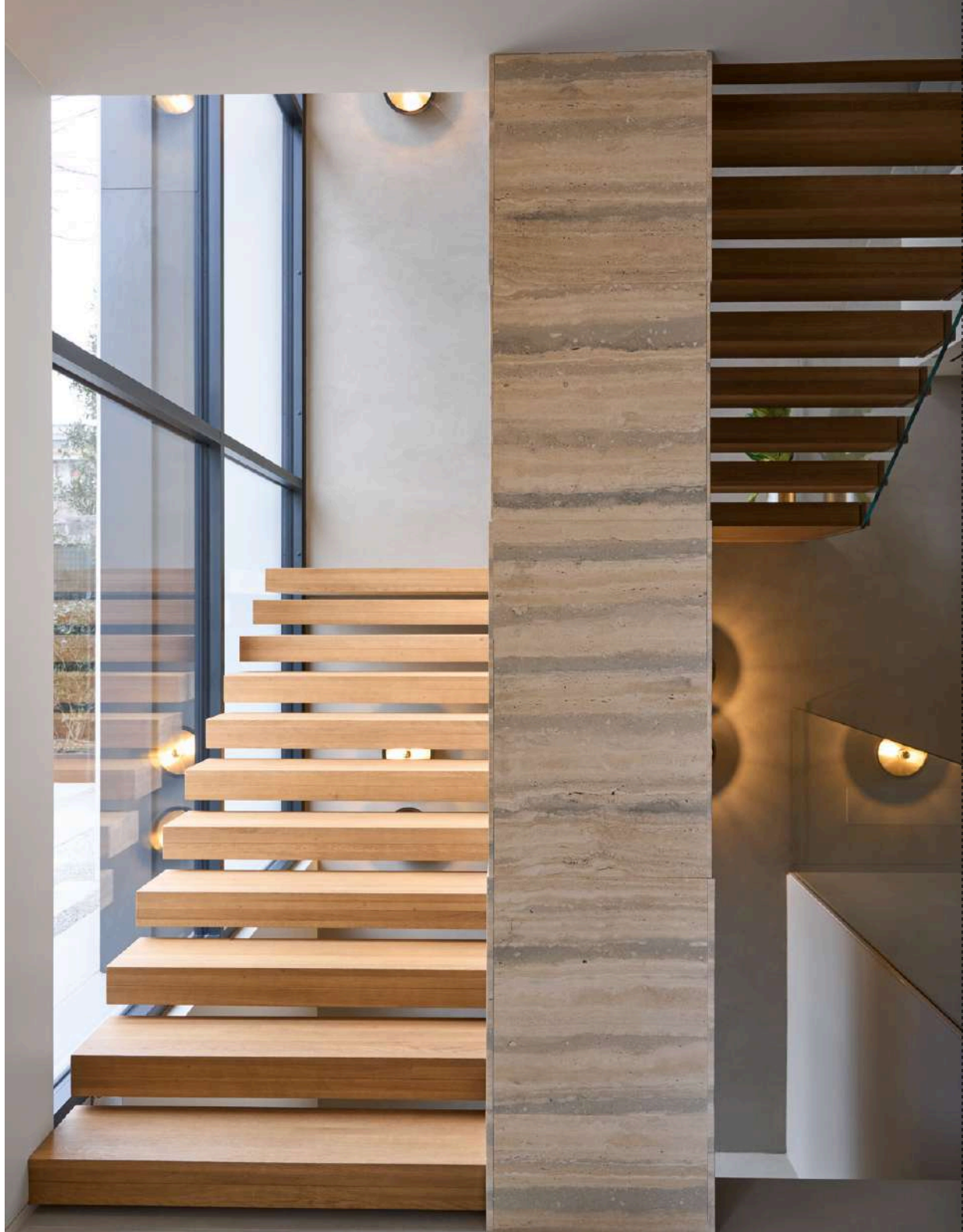
The cantilevered oak treads are fixed to a concrete wall clad in marble, creating a refined contrast between the warmth of wood and the solid elegance of stone.



*FOUR
x FOUR*

Completing the project, we also designed and produced the entrance gates and the railings, extending the same architectural language throughout the villa and giving the entire intervention a coherent and distinctive identity.





Glass balustrades preserve the purity of the design, enhancing the sense of openness and allowing the staircase to be fully perceived in relation to the surrounding architecture.

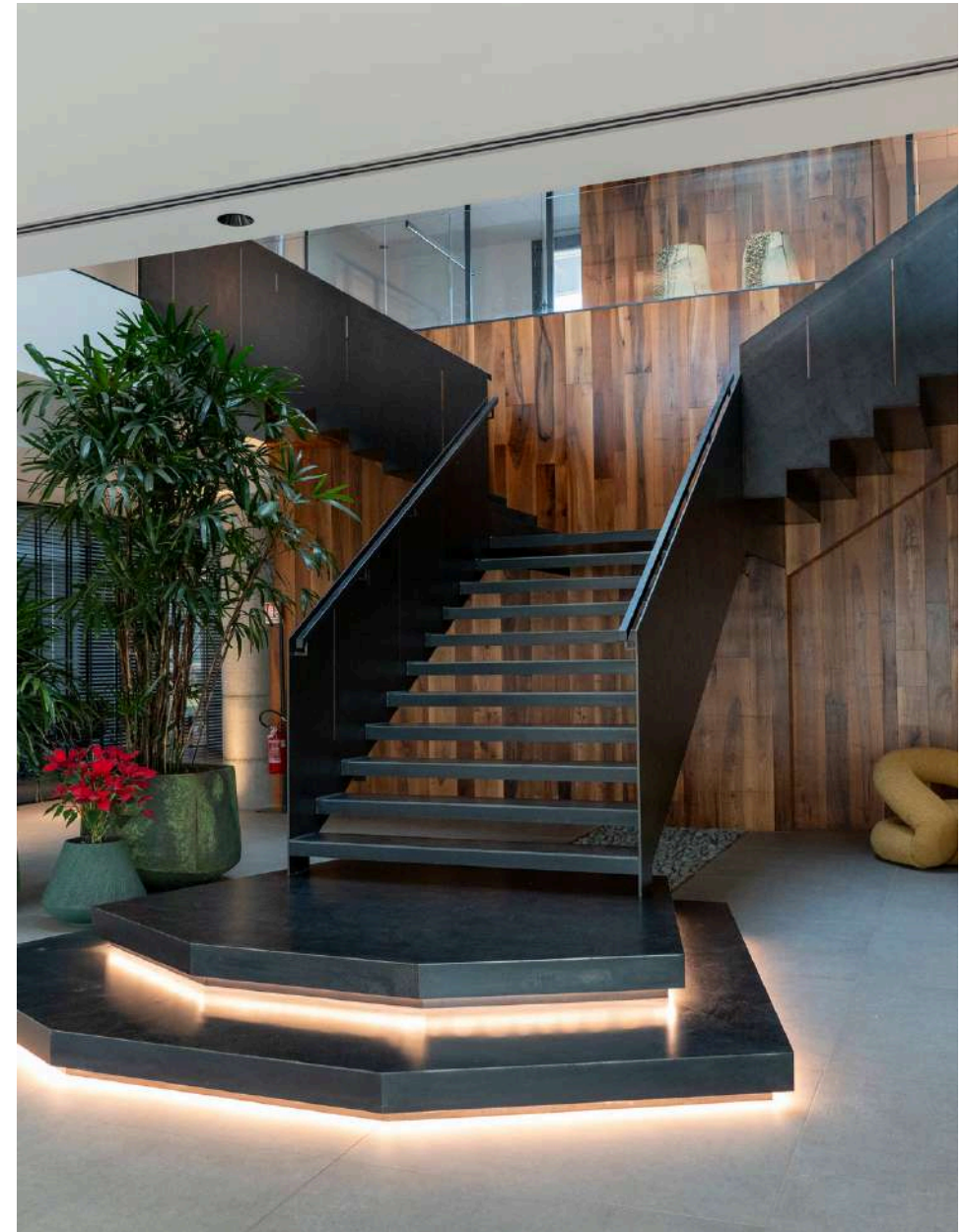
Its most striking feature is a six-metre-high glazed wall, which brings natural light deep into the space and reveals the full composition of the staircase as it rises around the marble-clad structural wall.

25

CORPORATE IDENTITY IN RAW IRON

Set within the entrance hall of a major construction company, this staircase is conceived as a bold architectural presence within a large and open reception space.

The composition begins from a wide two-level platform shaped like a diamond, entirely crafted in raw iron, introducing the staircase with a strong sculptural character.



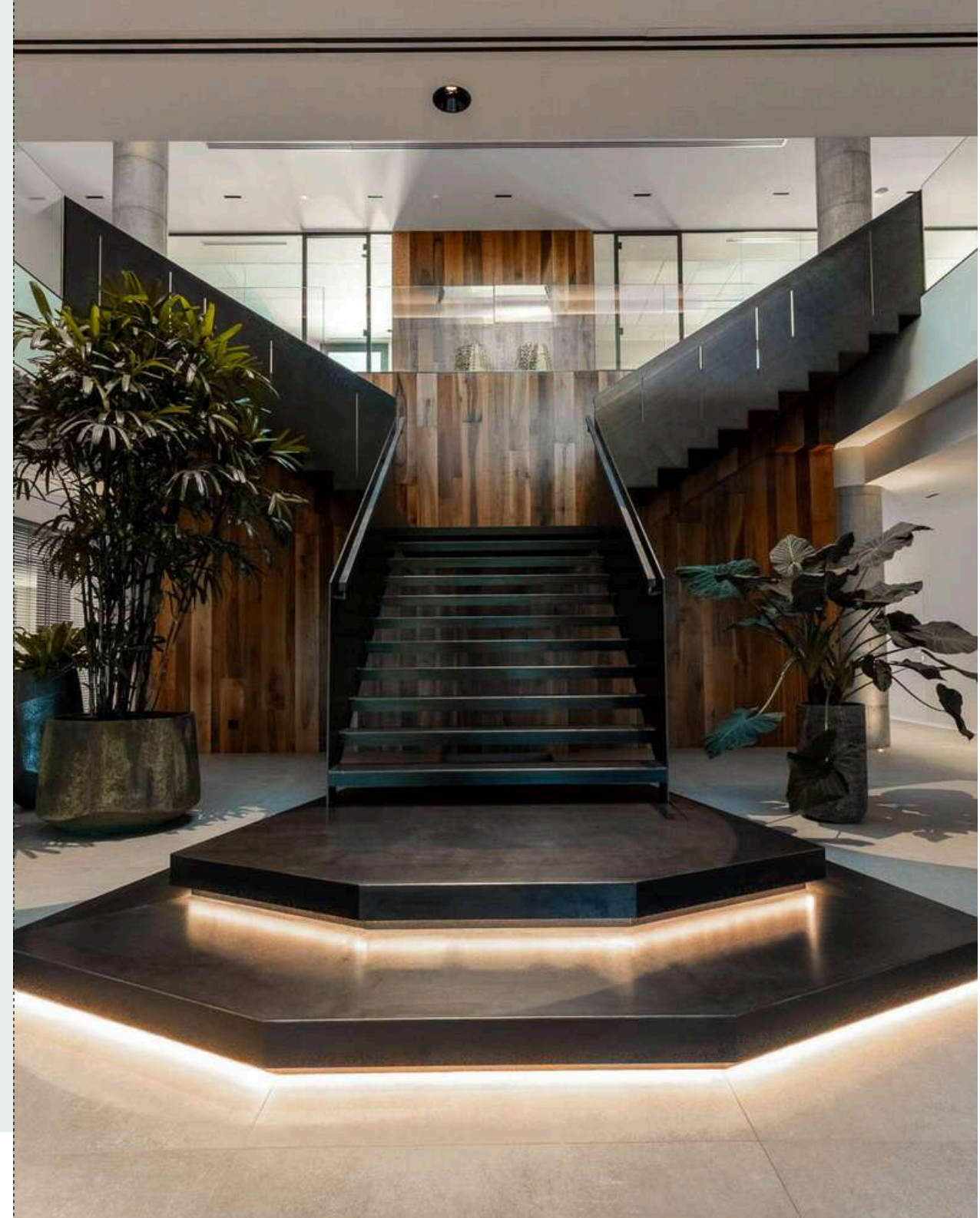
*CORPORATE
IDENTITY IN
RAW IRON*



From this generous base, the main flight rises in a broad linear movement to the first landing, where the staircase opens into two orthogonal flights leading to the upper floor and its large overlook onto the entrance below.

The entire structure is made of raw iron, expressing solidity, precision, and material authenticity. In contrast, a wooden backdrop adds warmth and depth to the space, enhancing the graphic clarity of the stair.

Integrated lighting beneath the risers of the platform emphasizes its geometry and gives the composition an added sense of depth, transforming the staircase into a central feature of the company's interior identity.



26

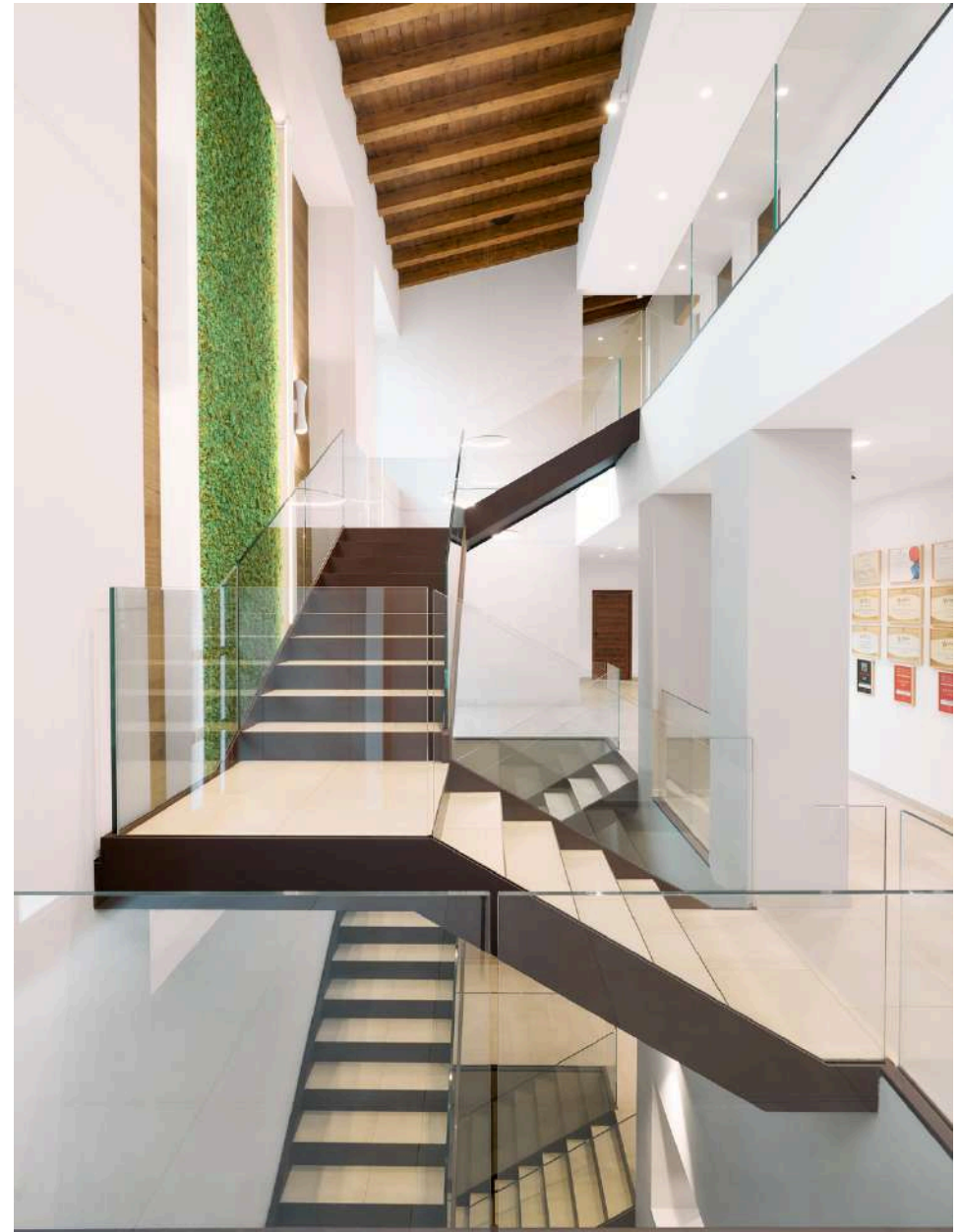
FRANCIACORTA TRESHOLD

Set within a winery in Franciacorta, this staircase system is composed of three overlapping flights that connect the ground floor with two underground levels dedicated to wine ageing, while a third stair rises upward from the same level to a mezzanine.

INTERBAU - STAIRCASE DESIGN



144



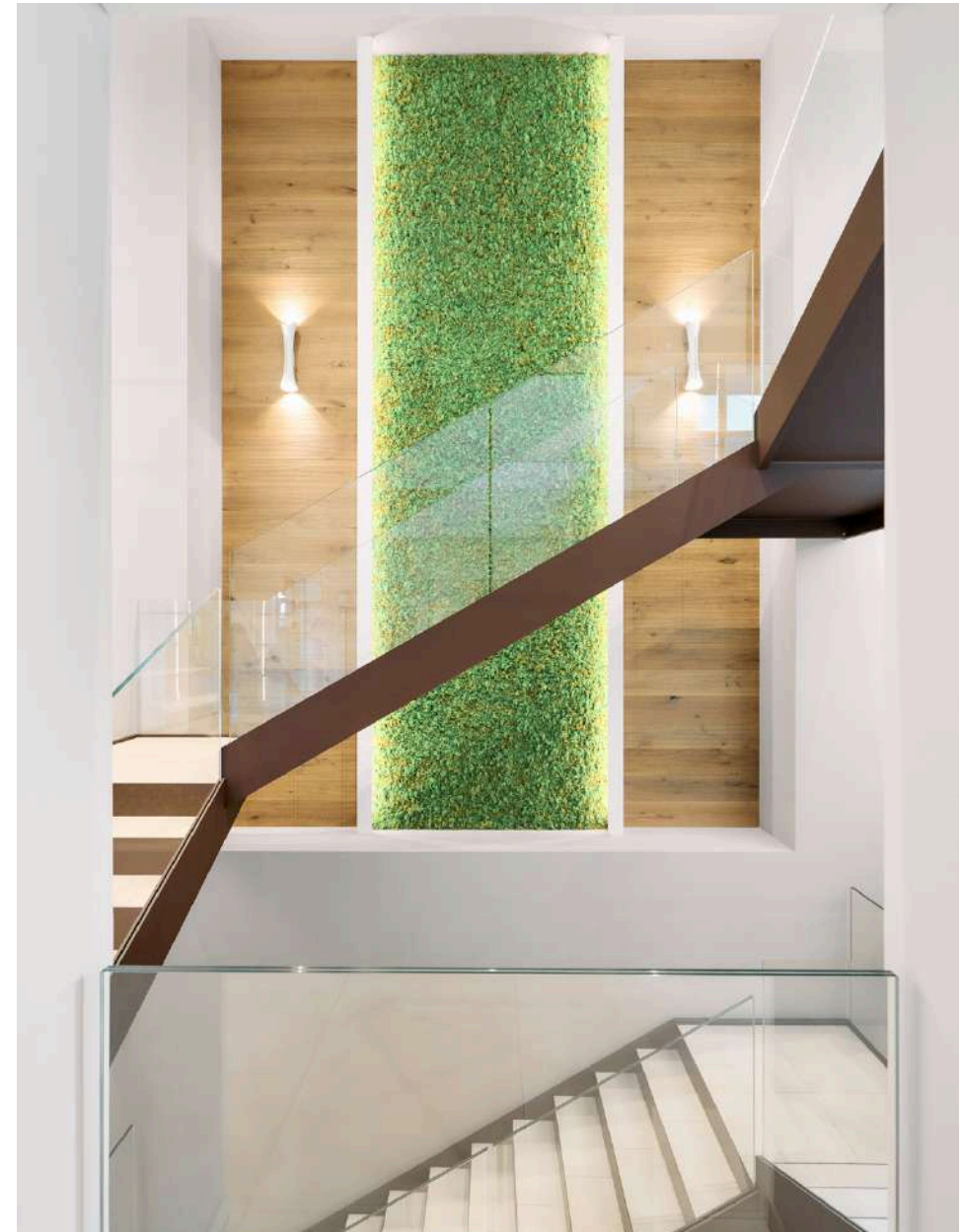
WINERY LOBBY - FRANCIACORTA, BRESCIA / ITALY

145

Crafted in painted metalwork and clad in tiles, the staircases are finished with treads in the same material as the floors, creating a strong sense of continuity throughout the space.

The glass balustrades are inserted between the structural elements, concealing all visible fixings and reinforcing the essential purity of the design.

Open within its own central volume, the staircase is defined by clean lines and a refined architectural rhythm, while a backdrop of preserved greenery adds a natural and expressive contrast to the composition.



27

INDUSTRIAL PERSPECTIVE

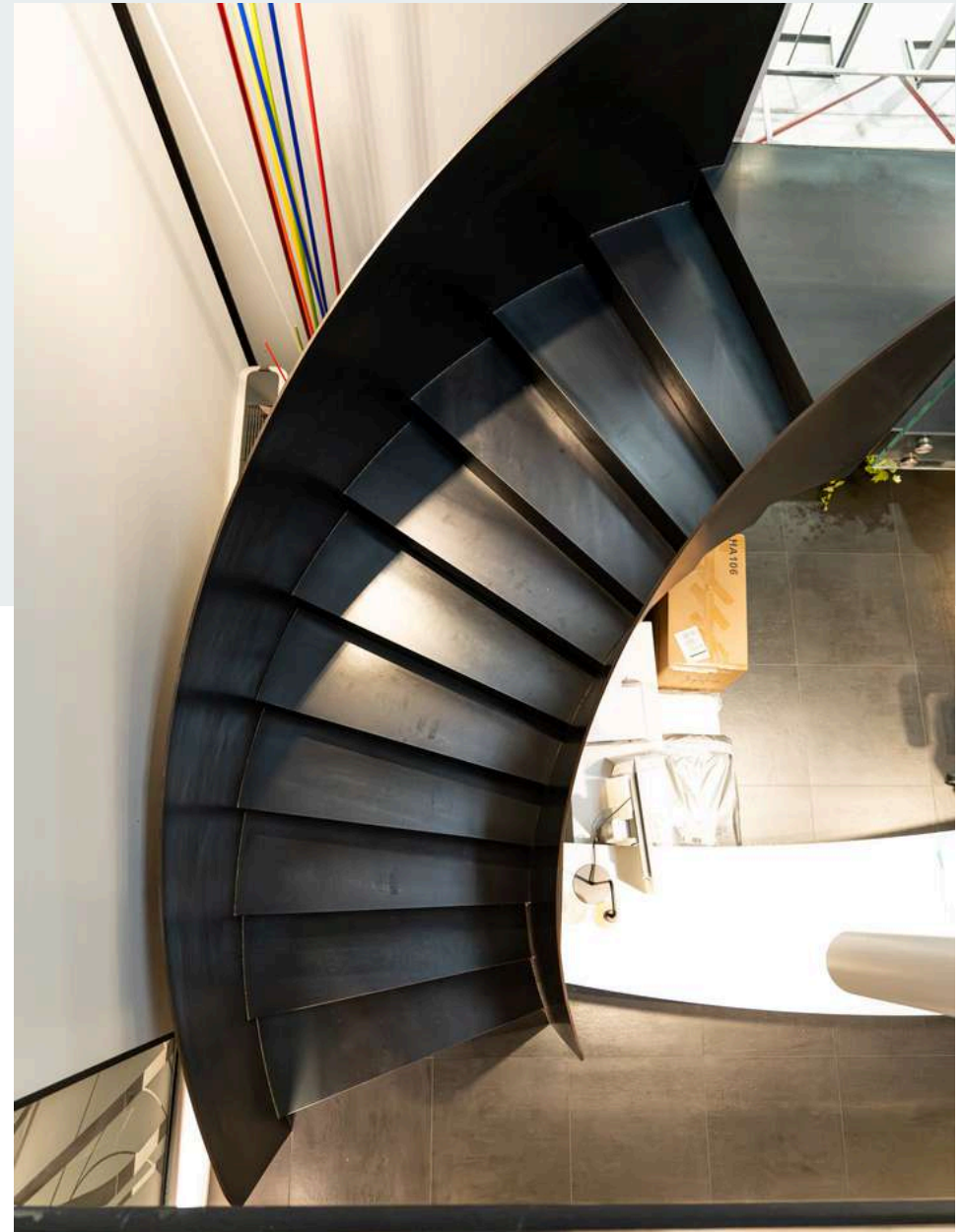
Set within the entrance of a production company, this staircase is designed as a strong architectural feature that also frames a direct visual connection with the working area beyond.

Formed by two helical flights in raw iron metalwork, the composition creates a U-shaped movement around a central landing fitted with a glass balustrade.

INTERBAU - STAIRCASE DESIGN



148

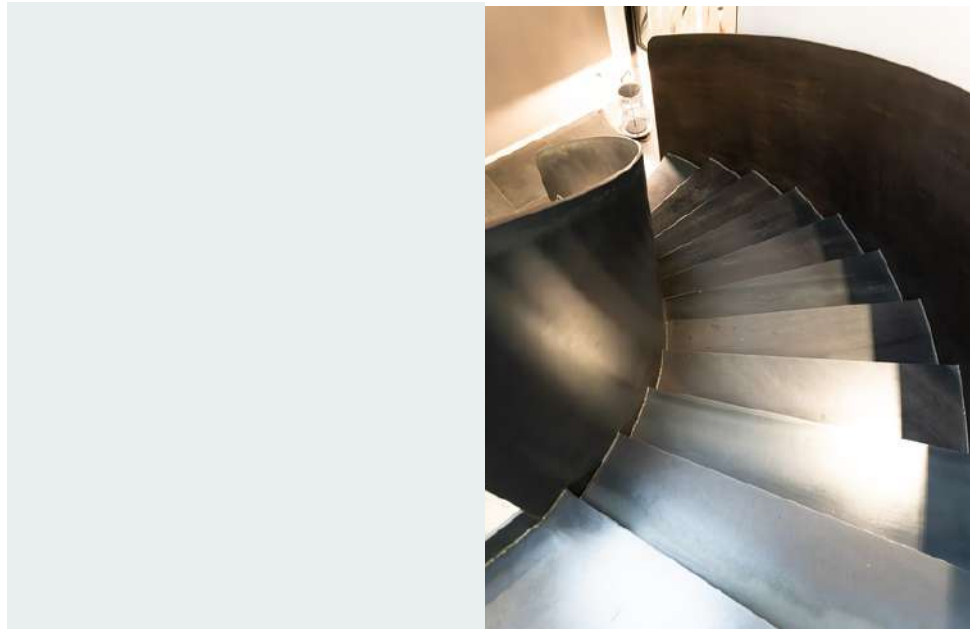


LOBBY MINVERVA SRL - BOLOGNA / ITALY

149

From the entrance, the view passes through the staircase and the large glazed wall behind it, opening a clear perspective onto the production space and making the company's activity part of the architectural experience.

The raw iron finish gives the structure a bold and authentic material presence, while the iron parapets at the upper level continue the same language, reinforcing the coherence and identity of the entire intervention.



28

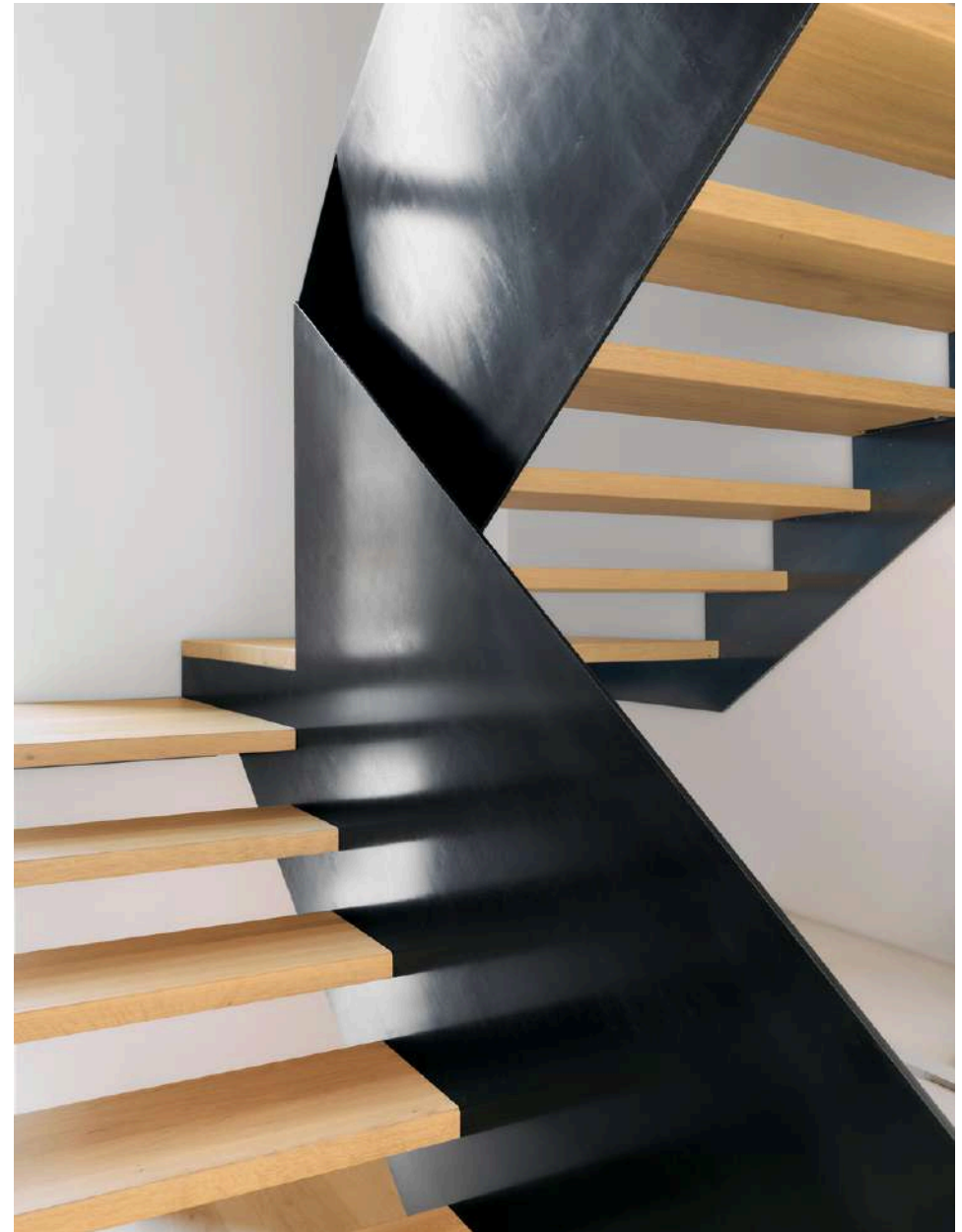
THE VERTICAL CUT OF LIGHT

Set within a mountain villa, this staircase is composed of two flights and defined by a material palette that balances strength, warmth, and clarity. The structure is formed by raw iron sheet metal, while the treads in oak introduce a natural and tactile contrast, giving the staircase a refined yet grounded presence within the interior.

INTERBAU: STAIRCASE DESIGN



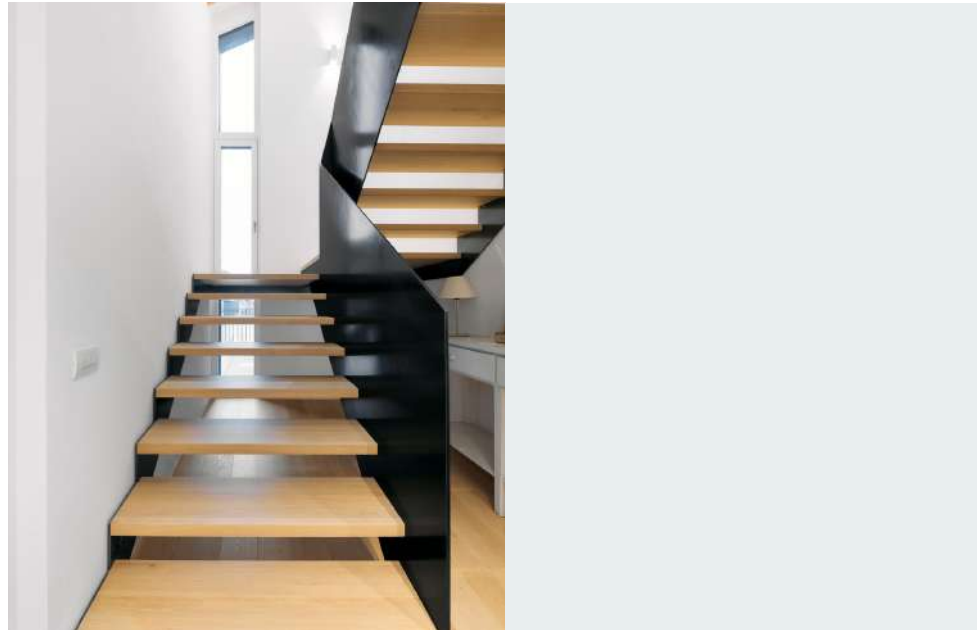
152



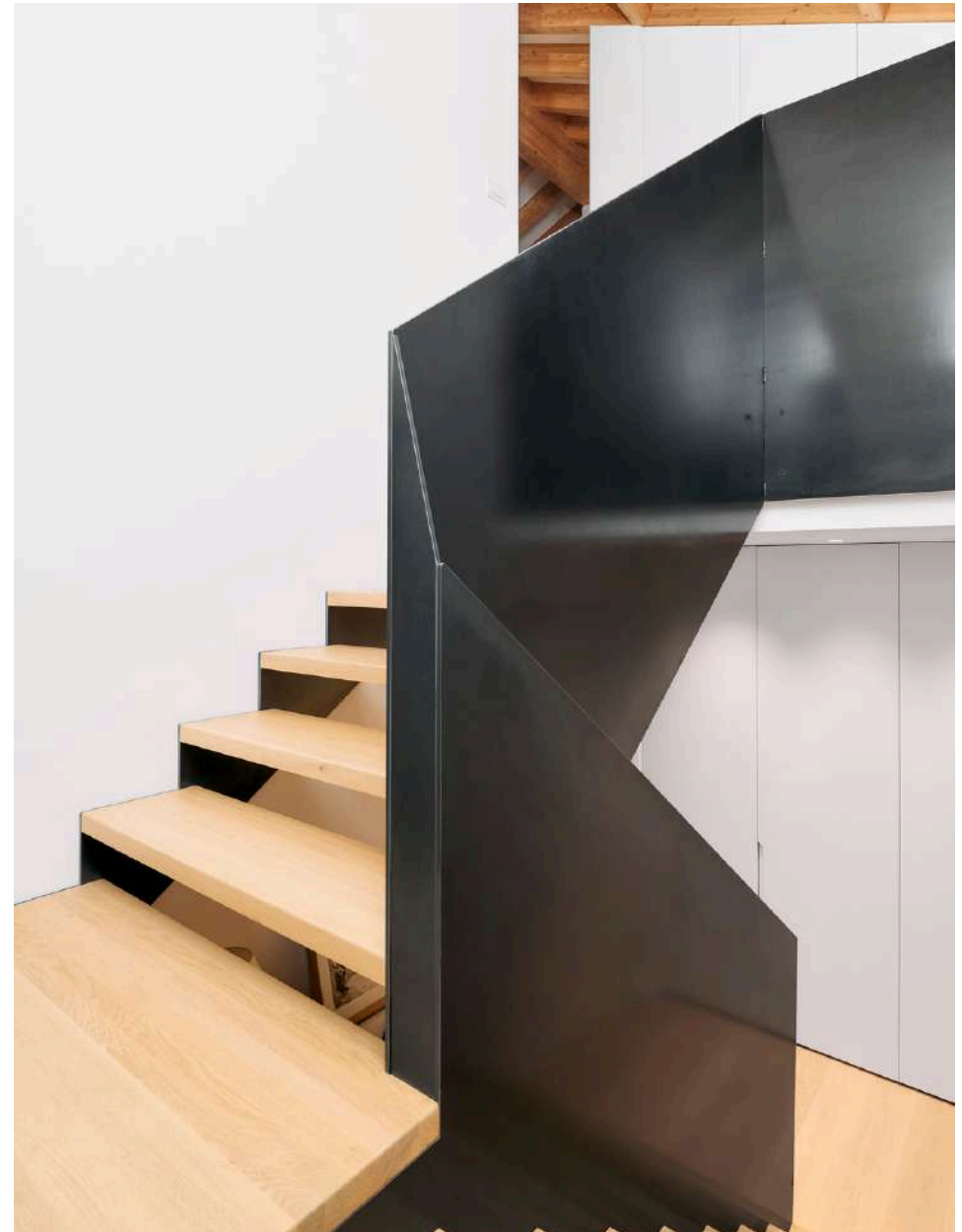
PRIVATE HOME – TRENTO / ITALY

153

A narrow and full-height window cut into the wall creates a vertical blade of light beside the staircase, bringing the exterior into view and establishing a direct visual connection with the entrance path outside. The result is a composition of clean lines and strong materials, where the staircase becomes an essential architectural element shaped by light, proportion, and the quiet atmosphere of the mountain setting.



154



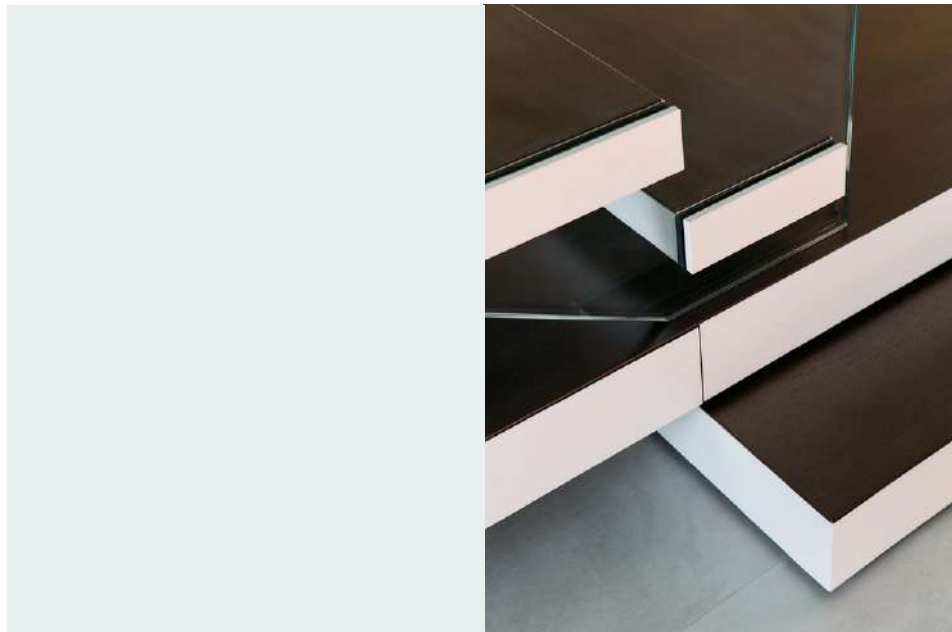
155

29

THE SILENT BALANCE

Set within a modern, minimal interior, this staircase features cantilevered white-painted metal treads with walnut cladding, rising from a double walnut platform. A continuous structural glass panel runs from the first step to the top landing, acting both as balustrade and as a key structural element, defining the staircase with lightness, precision, and refined simplicity

INTERBAU - STAIRCASE DESIGN



156



PRIVATE HOUSE - MANTOVA / ITALY

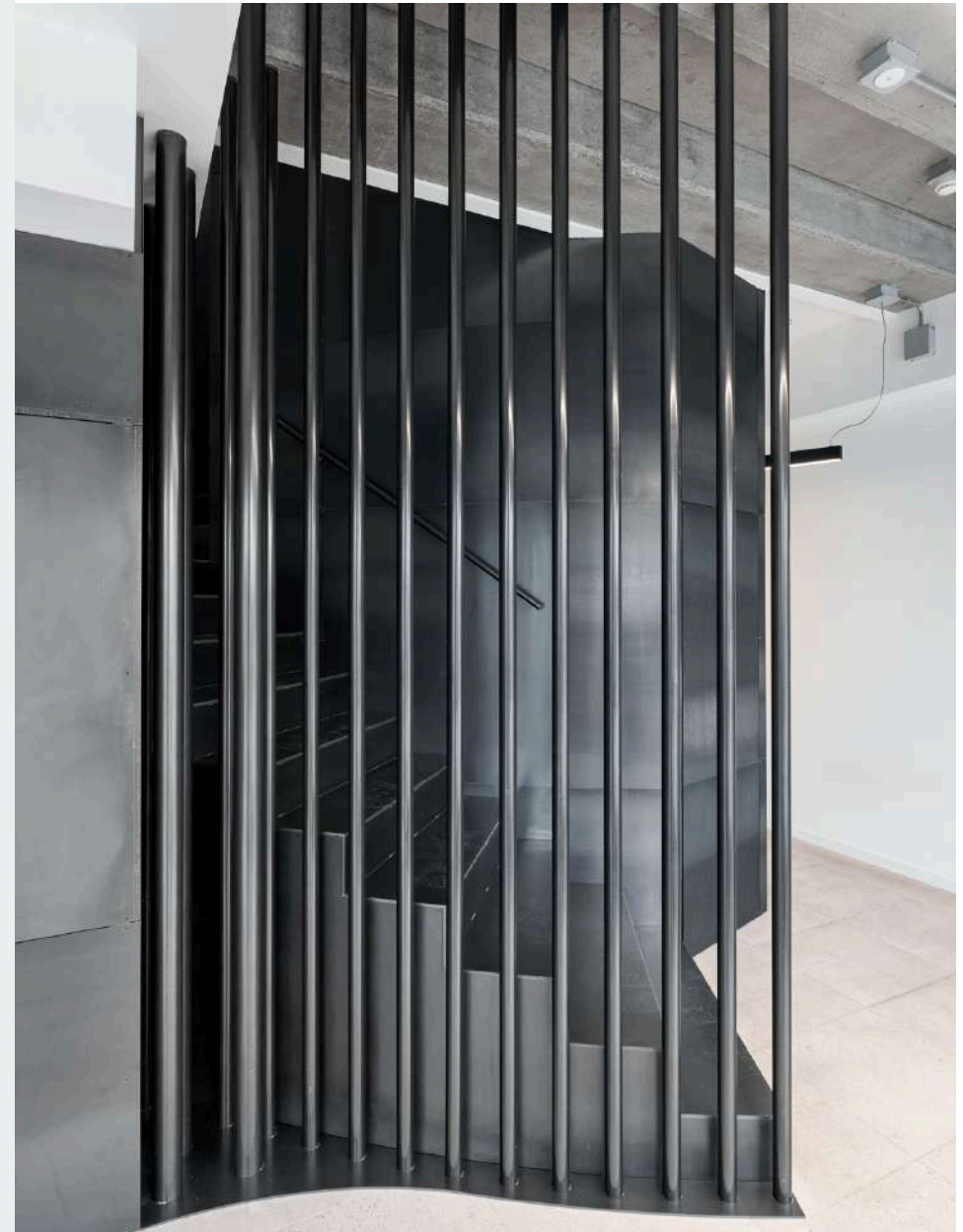
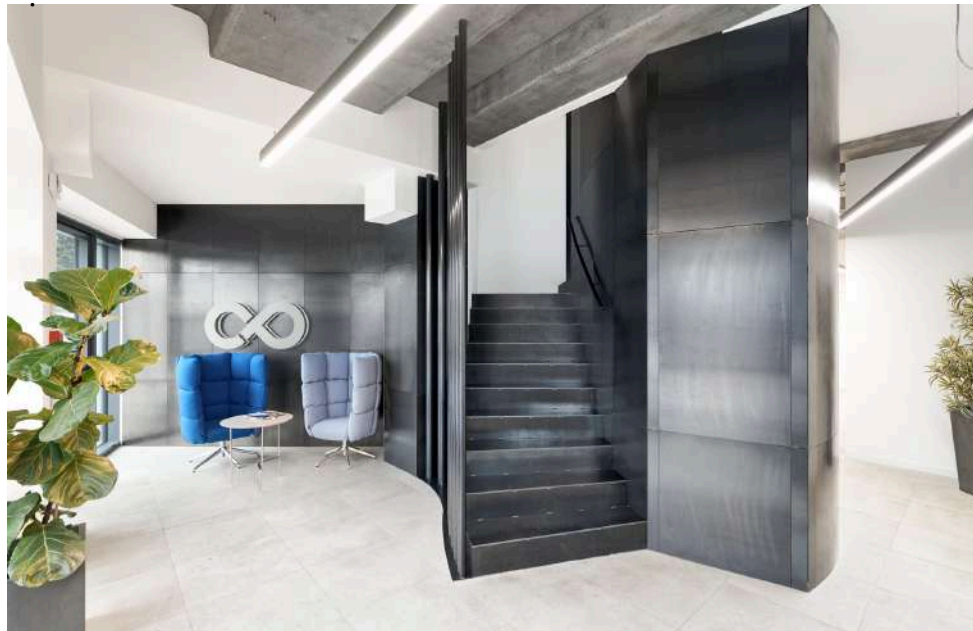
157

30

SCULPTED IN METAL

Set within the entrance of a major company in Bologna, this all-metal staircase is defined by fluid curves and the absence of any straight line. Inserted into a curvilinear opening, it becomes a strong sculptural feature within the space.

On the outer side, vertical metal tubes form the balustrade, while on the inner side the staircase wraps around a central volume concealing a storage area.



31

URBAN MONOLITH

Set within an apartment in Manhattan, this staircase is defined by the expressive presence of natural iron, used in its most authentic and essential form.

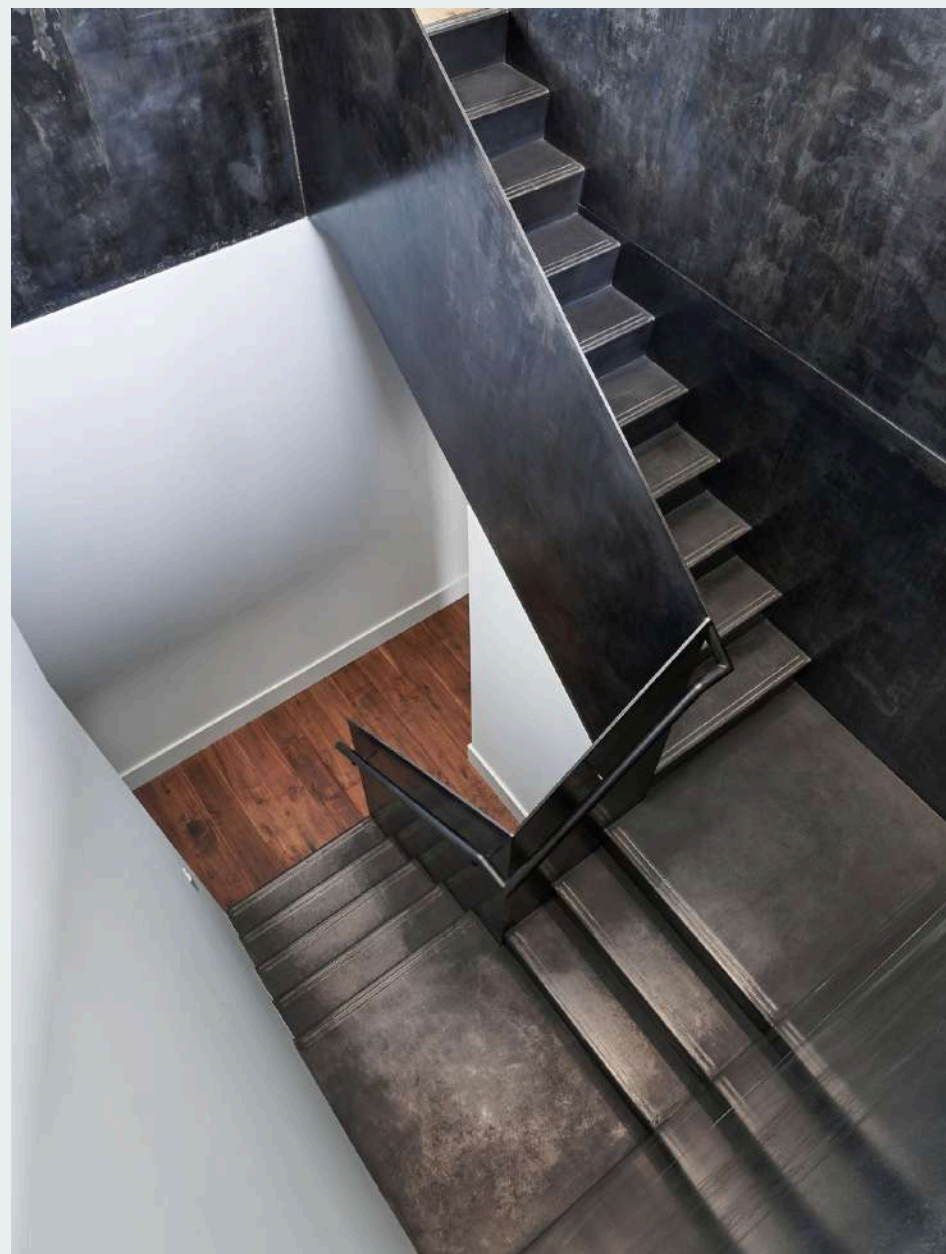
The dark material stands in strong contrast to the white walls and the warmth of the wooden floor, giving the interior a clear and contemporary identity.

In the background, views of downtown Manhattan complete the composition, reinforcing the relationship between the staircase and its urban setting.

INTERBAU: STAIRCASE DESIGN



160



PRIVATE HOME — LUXEMBOURG CITY / LUXEMBOURG

161

32

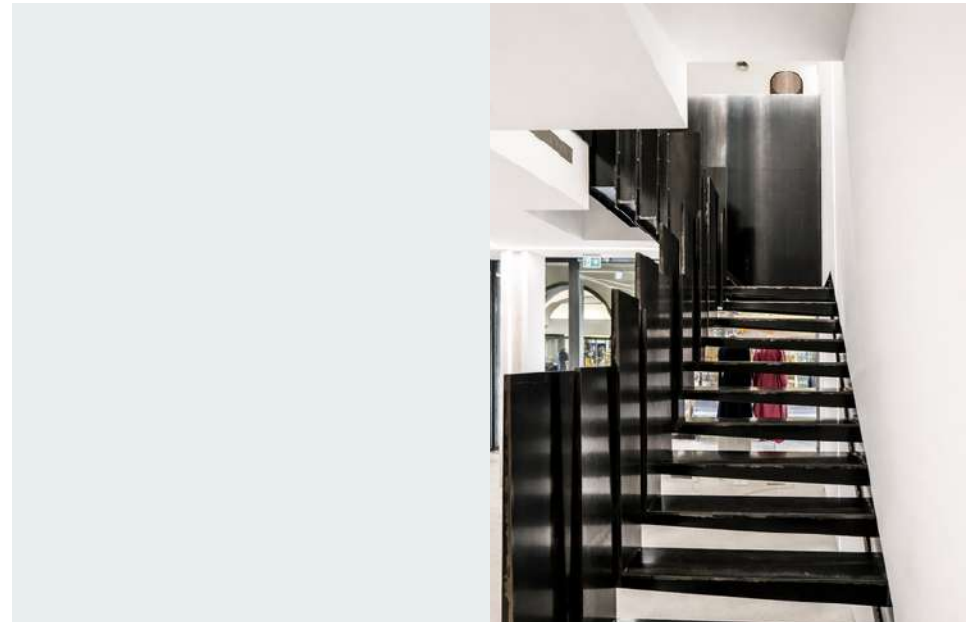
LUGANO BOUTIQUE

Set within a clothing store in the centre of Lugano, this staircase stands out as a sculptural feature within a minimal interior. Each tread folds upward to become part of the balustrade, while the overlapping iron panels create a dynamic geometric rhythm. Made entirely of natural iron, the staircase contrasts with the white walls and defines the space with strong contemporary character.

INTERBAU - STAIRCASE DESIGN



162



BOUTIQUE - LUGANO / SWISS

163

All rights are reserved. No part of this book
may be reproduced or transmitted in any form
or by any means, electronic or mechanical,
without the written permission of the owners
of the rights and of the publisher.

Printed in Italy, April
2026 © 2026 INTERBAU

interbau

ARCHISTAIRS

Interbau Srl
Via Linz 65 R / Trento (TN) 38121
+39-0461-1510484
Info@Interbau.it